

DATASHEET

REXO4 Rabbit Polyclonal Antibody

CAT. NO. APA16700

KEY FEATURES

Target	REXO4	Source / Host	Rabbit
Reactivity	Human, Mouse	Clonality	Polyclonal
Applications	WB	Conjugation	Unconjugated
Form / Buffer	Liquid in 0.42% Potassium phosphate, 0.87% Sodium chloride, pH 7.3, 30% glycerol, and 0.01% sodium azide.		Storage at -20°C

BACKGROUND

RNA exonuclease 4 (REXO4), also known as Exonuclease XPMC2, Prevents mitotic catastrophe 2 protein homolog, hPMC2. Belongs to the REXO4 family Subunit: Can bind ESR1 and ESR2. This interaction is abrogated by estrogen and augmented by tamoxifen treatment Subcellular location: Nucleus, nucleolus

APPLICATION

To ensure optimal assay performance, AREX recommends conducting reagent titration tailored to each testing system for optimal detection results.

WB	1:500 - 1:2000
----	----------------

*Results are sample-specific. Please refer to your local assay conditions and test parameters for reference.

PRODUCT OVERVIEW

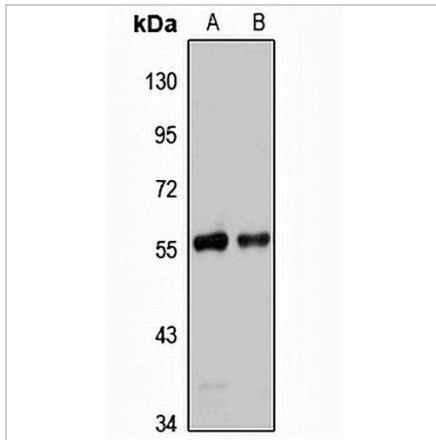
Description	Rabbit polyclonal antibody to REXO4
Specificity	Recognizes endogenous levels of REXO4 protein
Antibody Type	Primary antibody
Immunogen	Recombinant fusion protein of human REXO4. The exact sequence is proprietary.
Purification	The antibody was purified by immunogen affinity chromatography.
Molecular Weight	Predicted: 28; Observed: 55 kD
Form/Buffer	Liquid in 0.42% Potassium phosphate, 0.87% Sodium chloride, pH 7.3, 30% glycerol, and 0.01% sodium azide.
Alternative Names	PMC2; XPMC2H; RNA exonuclease 4; Exonuclease XPMC2; Prevents mitotic catastrophe 2 protein homolog; hPMC2
Gene Symbol	REXO4
Entrez Gene	57109(Human); 227656(Mouse)
SwissProt	Q9GZR2(Human); Q6PAQ4(Mouse)

*AREX continuously optimizes our products. Webpage content may not reflect the latest updates. For inquiries, please contact info@arexbio.com or your local distributor.

*Clone Number, Reactivity, Source/Host and Clonality can be found in the product name and Key Features section above.

DATASHEET**REXO4 Rabbit Polyclonal Antibody**

CAT. NO. APA16700

DATA**STORAGE**

Store at 4°C short term. For long term storage, store at -20°C, avoiding freeze/thaw cycles.

NOTE

For Research Use Only. Not for diagnostic, therapeutics, prophylactic or in vivo use.