

DATASHEET

RFFL Rabbit Polyclonal Antibody

CAT. NO. APA16701

KEY FEATURES

Target	RFFL	Source / Host	Rabbit
Reactivity	Human, Mouse, Rat	Clonality	Polyclonal
Applications	WB	Conjugation	Unconjugated
Form / Buffer	Liquid in 0.42% Potassium phosphate, 0.87% Sodium chloride, pH 7.3, 30% glycerol, and 0.01% sodium azide.		Storage at -20°C

BACKGROUND

E3 ubiquitin-protein ligase that regulates several biological processes through the ubiquitin-mediated proteasomal degradation of various target proteins. Mediates 'Lys-48'-linked polyubiquitination of PRR5L and its subsequent proteasomal degradation thereby indirectly regulating cell migration through the mTORC2 complex. Ubiquitinates the caspases CASP8 and CASP10, promoting their proteasomal degradation, to negatively regulate cell death downstream of death domain receptors in the extrinsic pathway of apoptosis. Negatively regulates the tumor necrosis factor-mediated signaling pathway through targeting of RIPK1 to ubiquitin-mediated proteasomal degradation. Negatively regulates p53/TP53 through its direct ubiquitination and targeting to proteasomal degradation.

APPLICATION

To ensure optimal assay performance, AREX recommends conducting reagent titration tailored to each testing system for optimal detection results.

WB	1:500 - 1:2000
----	----------------

*Results are sample-specific. Please refer to your local assay conditions and test parameters for reference.

PRODUCT OVERVIEW

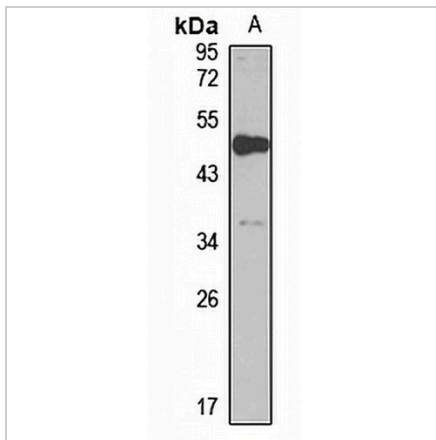
Description	Rabbit polyclonal antibody to RFFL
Specificity	Recognizes endogenous levels of RFFL protein
Antibody Type	Primary antibody
Immunogen	Recombinant fusion protein of human RFFL. The exact sequence is proprietary.
Purification	The antibody was purified by immunogen affinity chromatography.
Molecular Weight	Predicted: 36; Observed: 50 kD
Form/Buffer	Liquid in 0.42% Potassium phosphate, 0.87% Sodium chloride, pH 7.3, 30% glycerol, and 0.01% sodium azide.
Alternative Names	RNF189; RNF34L; E3 ubiquitin-protein ligase rifylylin; Caspase regulator CARP2; Caspases-8 and -10-associated RING finger protein 2; CARP-2; FYVE-RING finger protein Sakura; Fring; RING finger and FYVE-like domain-containing protein 1; RING finger protein 189; RING finger protein 34-like
Gene Symbol	RFFL
Entrez Gene	117584(Human); 67338(Mouse); 282844(Rat)
SwissProt	Q8WZ73(Human); Q6ZQM0(Mouse); Q8CIN9(Rat)

*AREX continuously optimizes our products. Webpage content may not reflect the latest updates. For inquiries, please contact info@arexbio.com or your local distributor.

*Clone Number, Reactivity, Source/Host and Clonality can be found in the product name and Key Features section above.

DATASHEET**RFFL Rabbit Polyclonal Antibody**

CAT. NO. APA16701

DATA

Western blot analysis of RFFL expression in U251MG (A) whole cell lysates. (Predicted band size: 36; 39; 40 kD; Observed band size: 50 kD)

STORAGE

Store at 4°C short term. For long term storage, store at -20°C, avoiding freeze/thaw cycles.

NOTE

For Research Use Only. Not for diagnostic, therapeutics, prophylactic or in vivo use.