

DATASHEET

Riboflavin Kinase Rabbit Polyclonal Antibody

CAT. NO. APA16702

KEY FEATURES

Target	Riboflavin Kinase	Source / Host	Rabbit
Reactivity	Human, Mouse	Clonality	Polyclonal
Applications	WB	Conjugation	Unconjugated
Form / Buffer	Liquid in 0.42% Potassium phosphate, 0.87% Sodium chloride, pH 7.3, 30% glycerol, and 0.01% sodium azide.		Storage at -20°C

BACKGROUND

Catalyzes the phosphorylation of riboflavin (vitamin B2) to form flavin-mononucleotide (FMN), hence rate-limiting enzyme in the synthesis of FAD. Essential for TNF-induced reactive oxygen species (ROS) production. Through its interaction with both TNFRSF1A and CYBA, physically and functionally couples TNFRSF1A to NADPH oxidase. TNF-activation of RFK may enhance the incorporation of FAD in NADPH oxidase, a critical step for the assembly and activation of NADPH oxidase.

APPLICATION

To ensure optimal assay performance, AREX recommends conducting reagent titration tailored to each testing system for optimal detection results.

WB	1:500 - 1:2000
----	----------------

*Results are sample-specific. Please refer to your local assay conditions and test parameters for reference.

PRODUCT OVERVIEW

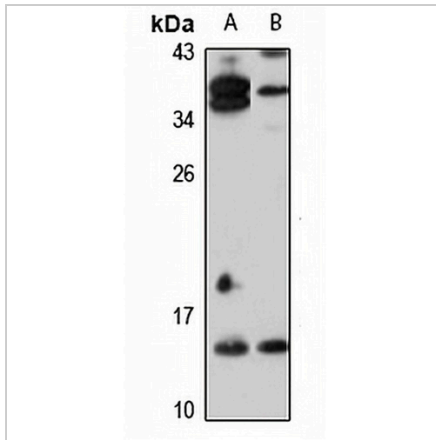
Description	Rabbit polyclonal antibody to Riboflavin Kinase
Specificity	Recognizes endogenous levels of Riboflavin Kinase protein
Antibody Type	Primary antibody
Immunogen	Recombinant fusion protein of human Riboflavin Kinase. The exact sequence is proprietary.
Purification	The antibody was purified by immunogen affinity chromatography.
Molecular Weight	Predicted: 17 kD; Observed: 14 kD
Form/Buffer	Liquid in 0.42% Potassium phosphate, 0.87% Sodium chloride, pH 7.3, 30% glycerol, and 0.01% sodium azide.
Alternative Names	Riboflavin kinase; ATP riboflavin 5'-phosphotransferase; Flavokinase
Gene Symbol	RFK
Entrez Gene	55312(Human); 54391(Mouse)
SwissProt	Q969G6(Human); Q8CFV9(Mouse)

*AREX continuously optimizes our products. Webpage content may not reflect the latest updates. For inquiries, please contact info@arexbio.com or your local distributor.

*Clone Number, Reactivity, Source/Host and Clonality can be found in the product name and Key Features section above.

DATASHEET**Riboflavin Kinase Rabbit Polyclonal Antibody**

CAT. NO. APA16702

DATA

Western blot analysis of Riboflavin Kinase expression in HeLa (A), mouse brain (B) whole cell lysates. (Predicted band size: 17 kD; Observed band size: 14 kD)

STORAGE

Store at 4°C short term. For long term storage, store at -20°C, avoiding freeze/thaw cycles.

NOTE

For Research Use Only. Not for diagnostic, therapeutics, prophylactic or in vivo use.