

DATASHEET

RFPL2 Rabbit Polyclonal Antibody

CAT. NO. APA16703

KEY FEATURES

Target	RFPL2	Source / Host	Rabbit
Reactivity	Human, Mouse, Rat	Clonality	Polyclonal
Applications	WB	Conjugation	Unconjugated
Form / Buffer	Liquid in 0.42% Potassium phosphate, 0.87% Sodium chloride, pH 7.3, 30% glycerol, and 0.01% sodium azide.		Storage at -20°C

BACKGROUND

Ret finger protein-like 2 (RFPL2), also known as RING finger protein 79. Tissue specificity: Seems to be expressed in prostate and less abundantly in adult brain, fetal liver, and fetal kidney

APPLICATION

To ensure optimal assay performance, AREX recommends conducting reagent titration tailored to each testing system for optimal detection results.

WB	1:500 - 1:2000
----	----------------

*Results are sample-specific. Please refer to your local assay conditions and test parameters for reference.

PRODUCT OVERVIEW

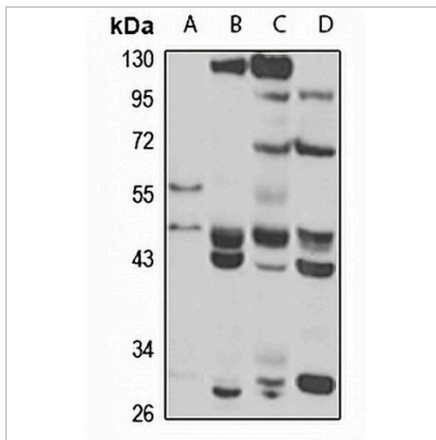
Description	Rabbit polyclonal antibody to RFPL2
Specificity	Recognizes endogenous levels of RFPL2 protein
Antibody Type	Primary antibody
Immunogen	Recombinant fusion protein of human RFPL2. The exact sequence is proprietary.
Purification	The antibody was purified by immunogen affinity chromatography.
Molecular Weight	Predicted: 32; Observed: 26; 42 kD
Form/Buffer	Liquid in 0.42% Potassium phosphate, 0.87% Sodium chloride, pH 7.3, 30% glycerol, and 0.01% sodium azide.
Alternative Names	RNF79; Ret finger protein-like 2; RING finger protein 79
Gene Symbol	RFPL2
Entrez Gene	10739(Human)
SwissProt	O75678(Human)

*AREX continuously optimizes our products. Webpage content may not reflect the latest updates. For inquiries, please contact info@arexbio.com or your local distributor.

*Clone Number, Reactivity, Source/Host and Clonality can be found in the product name and Key Features section above.

DATASHEET**RFPL2 Rabbit Polyclonal Antibody**

CAT. NO. APA16703

DATA

Western blot analysis of RFPL2 expression in MCF7 (A), mouse liver (B), mouse kidney (C), rat brain (D) whole cell lysates. (Predicted band size: 32; 35; 42 kD; Observed band size: 26; 42 kD)

STORAGE

Store at 4°C short term. For long term storage, store at -20°C, avoiding freeze/thaw cycles.

NOTE

For Research Use Only. Not for diagnostic, therapeutics, prophylactic or in vivo use.