

DATASHEET

RHBDL1 Rabbit Polyclonal Antibody

CAT. NO. APA16711

KEY FEATURES

Target	RHBDL1	Source / Host	Rabbit
Reactivity	Human, Mouse, Rat	Clonality	Polyclonal
Applications	WB	Conjugation	Unconjugated
Form / Buffer	Liquid in 0.42% Potassium phosphate, 0.87% Sodium chloride, pH 7.3, 30% glycerol, and 0.01% sodium azide.		Storage at -20°C

BACKGROUND

May be involved in regulated intramembrane proteolysis and the subsequent release of functional polypeptides from their membrane anchors.

APPLICATION

To ensure optimal assay performance, AREX recommends conducting reagent titration tailored to each testing system for optimal detection results.

WB	1:500 - 1:2000
----	----------------

*Results are sample-specific. Please refer to your local assay conditions and test parameters for reference.

PRODUCT OVERVIEW

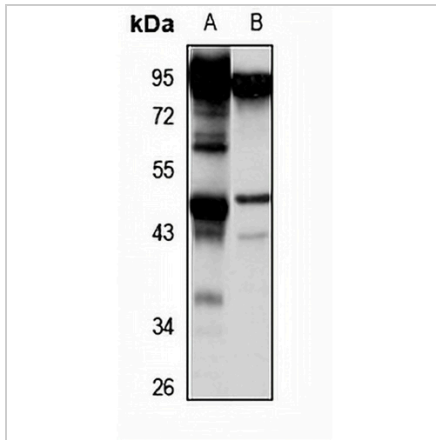
Description	Rabbit polyclonal antibody to RHBDL1
Specificity	Recognizes endogenous levels of RHBDL1 protein
Antibody Type	Primary antibody
Immunogen	Recombinant fusion protein of human RHBDL1. The exact sequence is proprietary.
Purification	The antibody was purified by immunogen affinity chromatography.
Molecular Weight	Predicted: 41; Observed: 48 kD
Form/Buffer	Liquid in 0.42% Potassium phosphate, 0.87% Sodium chloride, pH 7.3, 30% glycerol, and 0.01% sodium azide.
Alternative Names	RHBDL; Rhomboid-related protein 1; RRP; Rhomboid-like protein 1
Gene Symbol	RHBDL1
Entrez Gene	9028(Human); 214951(Mouse)
SwissProt	O75783(Human); Q8VC82(Mouse); O88779(Rat)

*AREX continuously optimizes our products. Webpage content may not reflect the latest updates. For inquiries, please contact info@arexbio.com or your local distributor.

*Clone Number, Reactivity, Source/Host and Clonality can be found in the product name and Key Features section above.

DATASHEET**RHBDL1 Rabbit Polyclonal Antibody**

CAT. NO. APA16711

DATA

Western blot analysis of RHBDL1 expression in mouse brain (A), rat kidney (B) whole cell lysates. (Predicted band size: 41; 48 kD; Observed band size: 48 kD)

STORAGE

Store at 4°C short term. For long term storage, store at -20°C, avoiding freeze/thaw cycles.

NOTE

For Research Use Only. Not for diagnostic, therapeutics, prophylactic or in vivo use.