

DATASHEET

RHOT2 Rabbit Polyclonal Antibody

CAT. NO. APA16714

KEY FEATURES

Target	RHOT2	Source / Host	Rabbit
Reactivity	Human, Mouse, Rat	Clonality	Polyclonal
Applications	WB	Conjugation	Unconjugated
Form / Buffer	Liquid in 0.42% Potassium phosphate, 0.87% Sodium chloride, pH 7.3, 30% glycerol, and 0.01% sodium azide.		Storage at-20°C

BACKGROUND

Atypical mitochondrial nucleoside-triphosphatase (NTPase) involved in mitochondrial trafficking involved in mitochondrial trafficking . Probably involved in control of anterograde transport of mitochondria and their subcellular distribution . Can hydrolyze GTP . Can hydrolyze ATP and UTP .

APPLICATION

To ensure optimal assay performance, AREX recommends conducting reagent titration tailored to each testing system for optimal detection results.

WB	1:500 - 1:2000
----	----------------

*Results are sample-specific. Please refer to your local assay conditions and test parameters for reference.

PRODUCT OVERVIEW

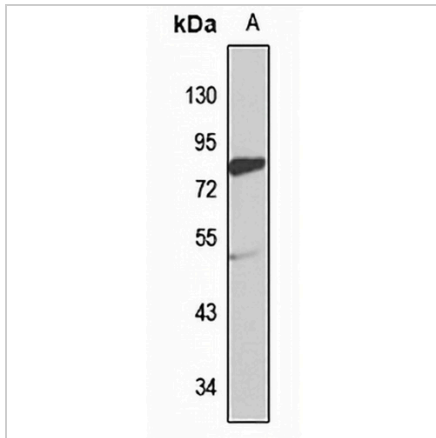
Description	Rabbit polyclonal antibody to RHOT2
Specificity	Recognizes endogenous levels of RHOT2 protein
Antibody Type	Primary antibody
Immunogen	Recombinant fusion protein of human RHOT2. The exact sequence is proprietary.
Purification	The antibody was purified by immunogen affinity chromatography.
Molecular Weight	Predicted: 23; Observed: 80 kD
Form/Buffer	Liquid in 0.42% Potassium phosphate, 0.87% Sodium chloride, pH 7.3, 30% glycerol, and 0.01% sodium azide.
Alternative Names	ARHT2; C16orf39; Mitochondrial Rho GTPase 2; MIRO-2; hMiro-2; Ras homolog gene family member T2
Gene Symbol	RHOT2
Entrez Gene	89941(Human); 214952(Mouse); 287156(Rat)
SwissProt	Q8IXI1(Human); Q8JZN7(Mouse); Q7TSA0(Rat)

*AREX continuously optimizes our products. Webpage content may not reflect the latest updates. For inquiries, please contact info@arexbio.com or your local distributor.

*Clone Number, Reactivity, Source/Host and Clonality can be found in the product name and Key Features section above.

DATASHEET**RHOT2 Rabbit Polyclonal Antibody**

CAT. NO. APA16714

DATA

Western blot analysis of RHOT2 expression in rat liver (A) whole cell lysates. (Predicted band size: 23; 68 kD; Observed band size: 80 kD)

STORAGE

Store at 4°C short term. For long term storage, store at -20°C, avoiding freeze/thaw cycles.

NOTE

For Research Use Only. Not for diagnostic, therapeutics, prophylactic or in vivo use.