

## DATASHEET

# RIF1 Rabbit Polyclonal Antibody

CAT. NO. APA16715

### KEY FEATURES

Target	RIF1	Source / Host	Rabbit
Reactivity	Human, Mouse	Clonality	Polyclonal
Applications	WB	Conjugation	Unconjugated
Form / Buffer	Liquid in 0.42% Potassium phosphate, 0.87% Sodium chloride, pH 7.3, 30% glycerol, and 0.01% sodium azide.		Storage at-20°C

### BACKGROUND

Key regulator of TP53BP1 that plays a key role in the repair of double-strand DNA breaks (DSBs) in response to DNA damage: acts by promoting non-homologous end joining (NHEJ)-mediated repair of DSBs in response to DNA damage: acts by promoting non-homologous end joining (NHEJ)-mediated repair of DSBs . In response to DNA damage, interacts with ATM-phosphorylated TP53BP1 . Interaction with TP53BP1 leads to dissociate the interaction between NUDT16L1/TIRR and TP53BP1, thereby unmasking the tandem Tudor-like domain of TP53BP1 and allowing recruitment to DNA DSBs . Once recruited to DSBs, RIF1 and TP53BP1 act by promoting NHEJ-mediated repair of DSBs .

### APPLICATION

To ensure optimal assay performance, AREX recommends conducting reagent titration tailored to each testing system for optimal detection results.

WB	1:500 - 1:2000
----	----------------

\*Results are sample-specific. Please refer to your local assay conditions and test parameters for reference.

### PRODUCT OVERVIEW

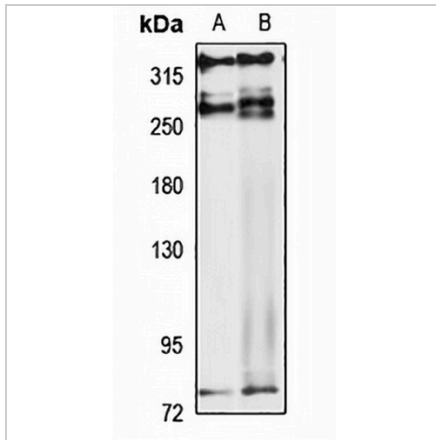
Description	Rabbit polyclonal antibody to RIF1
Specificity	Recognizes endogenous levels of RIF1 protein
Antibody Type	Primary antibody
Immunogen	Recombinant fusion protein of human RIF1. The exact sequence is proprietary.
Purification	The antibody was purified by immunogen affinity chromatography.
Molecular Weight	Predicted: 271; Observed: 350; 274 kD
Form/Buffer	Liquid in 0.42% Potassium phosphate, 0.87% Sodium chloride, pH 7.3, 30% glycerol, and 0.01% sodium azide.
Alternative Names	Telomere-associated protein RIF1; Rap1-interacting factor 1 homolog
Gene Symbol	RIF1
Entrez Gene	55183(Human); 51869(Mouse)
SwissProt	Q5UIP0(Human); Q6PR54(Mouse)

\*AREX continuously optimizes our products. Webpage content may not reflect the latest updates. For inquiries, please contact [info@arexbio.com](mailto:info@arexbio.com) or your local distributor.

\*Clone Number, Reactivity, Source/Host and Clonality can be found in the product name and Key Features section above.

**DATASHEET****RIF1 Rabbit Polyclonal Antibody**

CAT. NO. APA16715

**DATA**

Western blot analysis of RIF1 expression in HeLa (A), HEK293T (B) whole cell lysates. (Predicted band size: 271; 274 kD; Observed band size: 350; 274 kD)

**STORAGE**

Store at 4°C short term. For long term storage, store at -20°C, avoiding freeze/thaw cycles.

**NOTE**

For Research Use Only. Not for diagnostic, therapeutics, prophylactic or in vivo use.