

**DATASHEET**

**Rim2 Rabbit Polyclonal Antibody**

CAT. NO. APA16716

**KEY FEATURES**

Target	Rim2	Source / Host	Rabbit
Reactivity	Human, Mouse, Rat	Clonality	Polyclonal
Applications	WB	Conjugation	Unconjugated
Form / Buffer	Liquid in 0.42% Potassium phosphate, 0.87% Sodium chloride, pH 7.3, 30% glycerol, and 0.01% sodium azide.		Storage at -20°C

**BACKGROUND**

Rab effector involved in exocytosis. May act as scaffold protein. Plays a role in dendrite formation by melanocytes .

**APPLICATION**

To ensure optimal assay performance, AREX recommends conducting reagent titration tailored to each testing system for optimal detection results.

WB	1:500 - 1:2000
----	----------------

\*Results are sample-specific. Please refer to your local assay conditions and test parameters for reference.

**PRODUCT OVERVIEW**

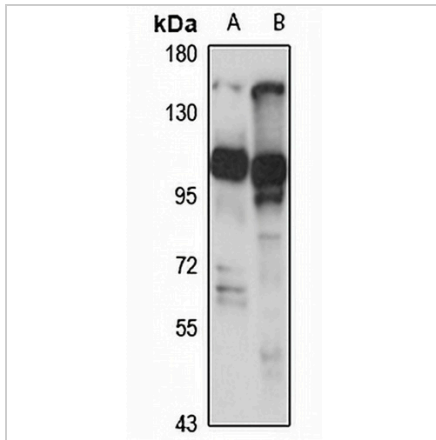
Description	Rabbit polyclonal antibody to Rim2
Specificity	Recognizes endogenous levels of Rim2 protein
Antibody Type	Primary antibody
Immunogen	Recombinant fusion protein of human Rim2. The exact sequence is proprietary.
Purification	The antibody was purified by immunogen affinity chromatography.
Molecular Weight	Predicted: 85; Observed: 165 kD
Form/Buffer	Liquid in 0.42% Potassium phosphate, 0.87% Sodium chloride, pH 7.3, 30% glycerol, and 0.01% sodium azide.
Alternative Names	KIAA0751; RAB3IP3; RIM2; Regulating synaptic membrane exocytosis protein 2; Rab-3-interacting molecule 2; RIM 2; Rab-3-interacting protein 3
Gene Symbol	RIMS2
Entrez Gene	9699(Human); 116838(Mouse); 116839(Rat)
SwissProt	Q9UQ26(Human); Q9EQZ7(Mouse); Q9JIS1(Rat)

\*AREX continuously optimizes our products. Webpage content may not reflect the latest updates. For inquiries, please contact [info@arexbio.com](mailto:info@arexbio.com) or your local distributor.

\*Clone Number, Reactivity, Source/Host and Clonality can be found in the product name and Key Features section above.

**DATASHEET****Rim2 Rabbit Polyclonal Antibody**

CAT. NO. APA16716

**DATA**

Western blot analysis of Rim2 expression in Jurkat (A), rat testis (B) whole cell lysates. (Predicted band size: 85; 165 kD; Observed band size: 165 kD)

**STORAGE**

Store at 4°C short term. For long term storage, store at -20°C, avoiding freeze/thaw cycles.

**NOTE**

For Research Use Only. Not for diagnostic, therapeutics, prophylactic or in vivo use.