

DATASHEET

RIPK1 Rabbit Polyclonal Antibody

CAT. NO. APA16718

KEY FEATURES

Target	RIPK1	Source / Host	Rabbit
Reactivity	Human, Mouse, Rat, Chicken	Clonality	Polyclonal
Applications	WB, IP	Conjugation	Unconjugated
Form / Buffer	Liquid in 0.42% Potassium phosphate, 0.87% Sodium chloride, pH 7.3, 30% glycerol, and 0.01% sodium azide.		Storage at-20°C

BACKGROUND

Serine-threonine kinase which is a key regulator of TNF-mediated apoptosis, necroptosis and inflammatory pathways . Exhibits kinase activity-dependent functions that regulate cell death and kinase-independent scaffold functions regulating inflammatory signaling and cell survival . Has kinase-independent scaffold functions: upon binding of TNF to TNFR1, RIPK1 is recruited to the TNF-R1 signaling complex (TNF-RSC also known as complex I) where it acts as a scaffold protein promoting cell survival, in part, by activating the canonical NF-kappa-B pathway .

APPLICATION

To ensure optimal assay performance, AREX recommends conducting reagent titration tailored to each testing system for optimal detection results.

WB	1:500 - 1:2000
IP	1:20 - 1:100

*Results are sample-specific. Please refer to your local assay conditions and test parameters for reference.

PRODUCT OVERVIEW

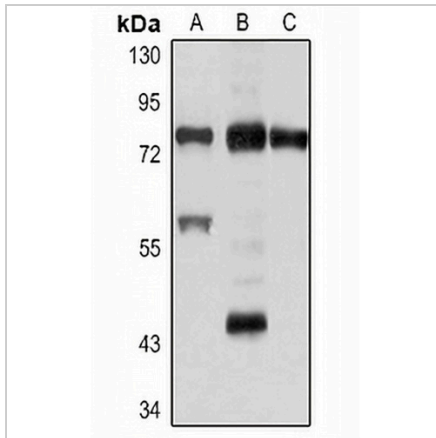
Description	Rabbit polyclonal antibody to RIPK1
Specificity	Recognizes endogenous levels of RIPK1 protein
Antibody Type	Primary antibody
Immunogen	Recombinant fusion protein of human RIPK1. The exact sequence is proprietary.
Purification	The antibody was purified by immunogen affinity chromatography.
Molecular Weight	Predicted: 70; Observed: 75; 38 kD
Form/Buffer	Liquid in 0.42% Potassium phosphate, 0.87% Sodium chloride, pH 7.3, 30% glycerol, and 0.01% sodium azide.
Alternative Names	RIP; RIP1; Receptor-interacting serine/threonine-protein kinase 1; Cell death protein RIP; Receptor-interacting protein 1; RIP-1; Serine/threonine-protein kinase RIP
Gene Symbol	RIPK1
Entrez Gene	8737(Human); 19766(Mouse)
SwissProt	Q13546(Human); Q60855(Mouse)

*AREX continuously optimizes our products. Webpage content may not reflect the latest updates. For inquiries, please contact info@arexbio.com or your local distributor.

*Clone Number, Reactivity, Source/Host and Clonality can be found in the product name and Key Features section above.

DATASHEET**RIPK1 Rabbit Polyclonal Antibody**

CAT. NO. APA16718

DATA

Western blot analysis of RIPK1 expression in HT1080 (A), mouse liver (B), C6 (C) whole cell lysates. (Predicted band size: 70; 75 kD; Observed band size: 75; 38 kD)

STORAGE

Store at 4°C short term. For long term storage, store at -20°C, avoiding freeze/thaw cycles.

NOTE

For Research Use Only. Not for diagnostic, therapeutics, prophylactic or in vivo use.