

DATASHEET

RNase H2B Rabbit Polyclonal Antibody

CAT. NO. APA16726

KEY FEATURES

Target	RNase H2B	Source / Host	Rabbit
Reactivity	Human, Mouse, Rat	Clonality	Polyclonal
Applications	WB	Conjugation	Unconjugated
Form / Buffer	Liquid in 0.42% Potassium phosphate, 0.87% Sodium chloride, pH 7.3, 30% glycerol, and 0.01% sodium azide.		Storage at -20°C

BACKGROUND

Non catalytic subunit of RNase H2, an endonuclease that specifically degrades the RNA of RNA:DNA hybrids. Participates in DNA replication, possibly by mediating the removal of lagging-strand Okazaki fragment RNA primers during DNA replication. Mediates the excision of single ribonucleotides from DNA:RNA duplexes.

APPLICATION

To ensure optimal assay performance, AREX recommends conducting reagent titration tailored to each testing system for optimal detection results.

WB	1:500 - 1:2000
----	----------------

*Results are sample-specific. Please refer to your local assay conditions and test parameters for reference.

PRODUCT OVERVIEW

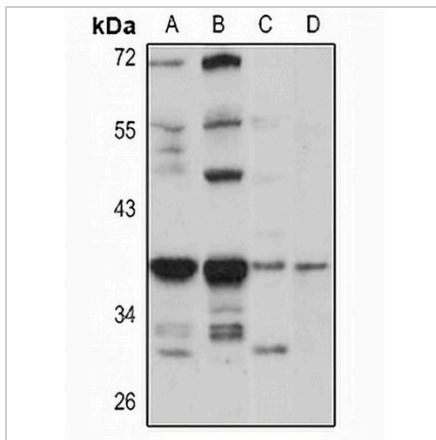
Description	Rabbit polyclonal antibody to RNase H2B
Specificity	Recognizes endogenous levels of RNase H2B protein
Antibody Type	Primary antibody
Immunogen	Recombinant fusion protein of human RNase H2B. The exact sequence is proprietary.
Purification	The antibody was purified by immunogen affinity chromatography.
Molecular Weight	Predicted: 29; Observed: 37 kD
Form/Buffer	Liquid in 0.42% Potassium phosphate, 0.87% Sodium chloride, pH 7.3, 30% glycerol, and 0.01% sodium azide.
Alternative Names	DLEU8; Ribonuclease H2 subunit B; RNase H2 subunit B; Aicardi-Goutieres syndrome 2 protein; AGS2; Deleted in lymphocytic leukemia 8; Ribonuclease HI subunit B
Gene Symbol	RNASEH2B
Entrez Gene	79621(Human); 67153(Mouse); 361056(Rat)
SwissProt	Q5TBB1(Human); Q80ZV0(Mouse); Q5XI96(Rat)

*AREX continuously optimizes our products. Webpage content may not reflect the latest updates. For inquiries, please contact info@arexbio.com or your local distributor.

*Clone Number, Reactivity, Source/Host and Clonality can be found in the product name and Key Features section above.

DATASHEET**RNase H2B Rabbit Polyclonal Antibody**

CAT. NO. APA16726

DATA

Western blot analysis of RNase H2B expression in HeLa (A), MCF7 (B), mouse thymus (C), rat thymus (D) whole cell lysates. (Predicted band size: 29; 35 kD; Observed band size: 37 kD)

STORAGE

Store at 4°C short term. For long term storage, store at -20°C, avoiding freeze/thaw cycles.

NOTE

For Research Use Only. Not for diagnostic, therapeutics, prophylactic or in vivo use.