

**DATASHEET**

**RNase H2C Rabbit Polyclonal Antibody**

CAT. NO. APA16727

**KEY FEATURES**

Target	RNase H2C	Source / Host	Rabbit
Reactivity	Human, Mouse	Clonality	Polyclonal
Applications	WB	Conjugation	Unconjugated
Form / Buffer	Liquid in 0.42% Potassium phosphate, 0.87% Sodium chloride, pH 7.3, 30% glycerol, and 0.01% sodium azide.		Storage at -20°C

**BACKGROUND**

Non catalytic subunit of RNase H2, an endonuclease that specifically degrades the RNA of RNA:DNA hybrids. Participates in DNA replication, possibly by mediating the removal of lagging-strand Okazaki fragment RNA primers during DNA replication. Mediates the excision of single ribonucleotides from DNA:RNA duplexes.

**APPLICATION**

To ensure optimal assay performance, AREX recommends conducting reagent titration tailored to each testing system for optimal detection results.

WB	1:500 - 1:2000
----	----------------

\*Results are sample-specific. Please refer to your local assay conditions and test parameters for reference.

**PRODUCT OVERVIEW**

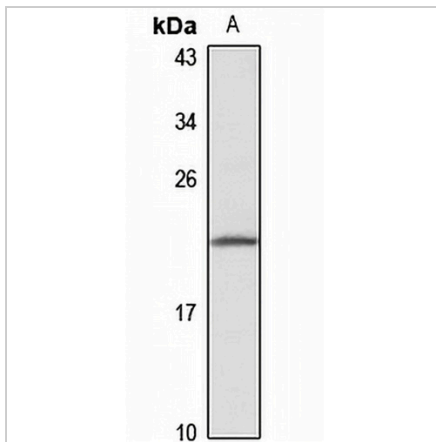
Description	Rabbit polyclonal antibody to RNase H2C
Specificity	Recognizes endogenous levels of RNase H2C protein
Antibody Type	Primary antibody
Immunogen	Recombinant fusion protein of human RNase H2C. The exact sequence is proprietary.
Purification	The antibody was purified by immunogen affinity chromatography.
Molecular Weight	Predicted: 17 kD; Observed: 20 kD
Form/Buffer	Liquid in 0.42% Potassium phosphate, 0.87% Sodium chloride, pH 7.3, 30% glycerol, and 0.01% sodium azide.
Alternative Names	AYP1; Ribonuclease H2 subunit C; RNase H2 subunit C; Aicardi-Goutieres syndrome 3 protein; AGS3; RNase H1 small subunit; Ribonuclease HI subunit C
Gene Symbol	RNASEH2C
Entrez Gene	84153(Human); 68209(Mouse)
SwissProt	Q8TDP1(Human); Q9CQ18(Mouse)

\*AREX continuously optimizes our products. Webpage content may not reflect the latest updates. For inquiries, please contact [info@arexbio.com](mailto:info@arexbio.com) or your local distributor.

\*Clone Number, Reactivity, Source/Host and Clonality can be found in the product name and Key Features section above.

**DATASHEET****RNase H2C Rabbit Polyclonal Antibody**

CAT. NO. APA16727

**DATA**

Western blot analysis of RNase H2C expression in HeLa (A) whole cell lysates. (Predicted band size: 17 kD; Observed band size: 20 kD)

**STORAGE**

Store at 4°C short term. For long term storage, store at -20°C, avoiding freeze/thaw cycles.

**NOTE**

For Research Use Only. Not for diagnostic, therapeutics, prophylactic or in vivo use.