

DATASHEET

RNF10 Rabbit Polyclonal Antibody

CAT. NO. APA16729

KEY FEATURES

Target	RNF10	Source / Host	Rabbit
Reactivity	Human, Mouse, Rat	Clonality	Polyclonal
Applications	WB	Conjugation	Unconjugated
Form / Buffer	Liquid in 0.42% Potassium phosphate, 0.87% Sodium chloride, pH 7.3, 30% glycerol, and 0.01% sodium azide.		Storage at -20°C

BACKGROUND

E3 ubiquitin-protein ligase that catalyzes monoubiquitination of 40S ribosomal proteins RPS2/us5 and RPS3/us3 in response to ribosome stalling. Part of a ribosome quality control that takes place when ribosomes have stalled during translation initiation (iRQC) or elongation. The ribosome quality control is activated in response to ribosome subunit imbalance, amino acid starvation or downstream the EIF2AK4/GCN2-mediated integrated stress response (ISR). RNF10 acts by mediating monoubiquitination of RPS2/us5 and RPS3/us3: monoubiquitinated RPS2/us5 and RPS3/us3 are then recognized by RIOK3 kinase, leading to 18S non-functional rRNA decay and degradation of the 40S ribosomal subunit. The action of RNF10 in iRQC is counteracted by USP10.

APPLICATION

To ensure optimal assay performance, AREX recommends conducting reagent titration tailored to each testing system for optimal detection results.

WB	1:500 - 1:1000
----	----------------

*Results are sample-specific. Please refer to your local assay conditions and test parameters for reference.

PRODUCT OVERVIEW

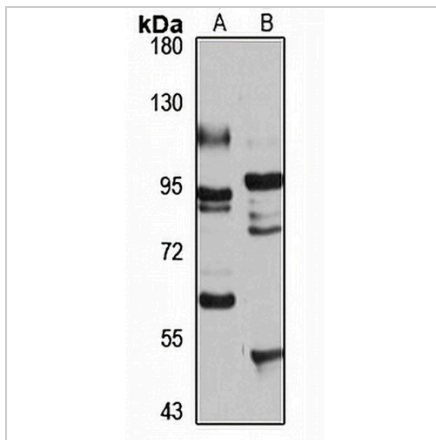
Description	Rabbit polyclonal antibody to RNF10
Specificity	Recognizes endogenous levels of RNF10 protein
Antibody Type	Primary antibody
Immunogen	Recombinant fusion protein of human RNF10. The exact sequence is proprietary.
Purification	The antibody was purified by immunogen affinity chromatography.
Molecular Weight	Predicted: 89; Observed: 100 kD
Form/Buffer	Liquid in 0.42% Potassium phosphate, 0.87% Sodium chloride, pH 7.3, 30% glycerol, and 0.01% sodium azide.
Alternative Names	KIAA0262; RIE2; RING finger protein 10
Gene Symbol	RNF10
Entrez Gene	9921(Human); 50849(Mouse); 288710(Rat)
SwissProt	Q8N5U6(Human); Q3UIW5(Mouse); Q5XI59(Rat)

*AREX continuously optimizes our products. Webpage content may not reflect the latest updates. For inquiries, please contact info@arexbio.com or your local distributor.

*Clone Number, Reactivity, Source/Host and Clonality can be found in the product name and Key Features section above.

DATASHEET**RNF10 Rabbit Polyclonal Antibody**

CAT. NO. APA16729

DATA**STORAGE**

Store at 4°C short term. For long term storage, store at -20°C, avoiding freeze/thaw cycles.

NOTE

For Research Use Only. Not for diagnostic, therapeutics, prophylactic or in vivo use.