

DATASHEET

RNF212 Rabbit Polyclonal Antibody

CAT. NO. APA16737

KEY FEATURES

Target	RNF212	Source / Host	Rabbit
Reactivity	Human, Mouse, Rat	Clonality	Polyclonal
Applications	WB	Conjugation	Unconjugated
Form / Buffer	Liquid in 0.42% Potassium phosphate, 0.87% Sodium chloride, pH 7.3, 30% glycerol, and 0.01% sodium azide.		Storage at -20°C

BACKGROUND

SUMO E3 ligase that acts as a regulator of crossing-over during meiosis: required to couple chromosome synapsis to the formation of crossover-specific recombination complexes. Localizes to recombination sites and stabilizes meiosis-specific recombination factors, such as MutS-gamma complex proteins (MSH4 and MSH5) and TEX11. May mediate sumoylation of target proteins MSH4 and/or MSH5, leading to enhance their binding to recombination sites. Acts as a limiting factor for crossover designation and/or reinforcement and plays an antagonist role with CCNB1IP1/HEI10 in the regulation of meiotic recombination .

APPLICATION

To ensure optimal assay performance, AREX recommends conducting reagent titration tailored to each testing system for optimal detection results.

WB	1:500 - 1:2000
----	----------------

*Results are sample-specific. Please refer to your local assay conditions and test parameters for reference.

PRODUCT OVERVIEW

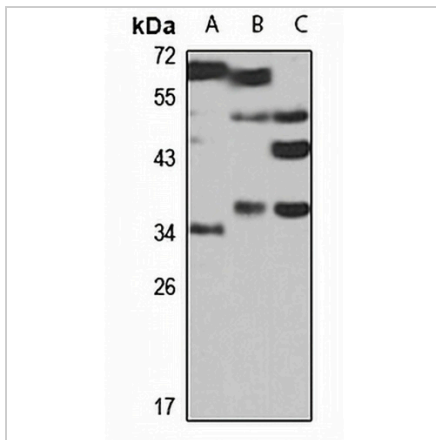
Description	Rabbit polyclonal antibody to RNF212
Specificity	Recognizes endogenous levels of RNF212 protein
Antibody Type	Primary antibody
Immunogen	Recombinant fusion protein of human RNF212. The exact sequence is proprietary.
Purification	The antibody was purified by immunogen affinity chromatography.
Molecular Weight	Predicted: 14; Observed: 37 kD
Form/Buffer	Liquid in 0.42% Potassium phosphate, 0.87% Sodium chloride, pH 7.3, 30% glycerol, and 0.01% sodium azide.
Alternative Names	Probable E3 SUMO-protein ligase RNF212; RING finger protein 212
Gene Symbol	RNF212
Entrez Gene	285498(Human); 671564(Mouse)
SwissProt	Q495C1(Human); F6TQD1(Mouse)

*AREX continuously optimizes our products. Webpage content may not reflect the latest updates. For inquiries, please contact info@arexbio.com or your local distributor.

*Clone Number, Reactivity, Source/Host and Clonality can be found in the product name and Key Features section above.

DATASHEET**RNF212 Rabbit Polyclonal Antibody**

CAT. NO. APA16737

DATA

Western blot analysis of RNF212 expression in THP1 (A), mouse pancreas (B), rat testis (C) whole cell lysates. (Predicted band size: 14; 21; 26; 30; 31; 33 kD; Observed band size: 37 kD)

STORAGE

Store at 4°C short term. For long term storage, store at -20°C, avoiding freeze/thaw cycles.

NOTE

For Research Use Only. Not for diagnostic, therapeutics, prophylactic or in vivo use.