

**DATASHEET**

**RNMTL1 Rabbit Polyclonal Antibody**

CAT. NO. APA16740

**KEY FEATURES**

Target	RNMTL1	Source / Host	Rabbit
Reactivity	Human, Mouse	Clonality	Polyclonal
Applications	WB	Conjugation	Unconjugated
Form / Buffer	Liquid in 0.42% Potassium phosphate, 0.87% Sodium chloride, pH 7.3, 30% glycerol, and 0.01% sodium azide.		Storage at -20°C

**BACKGROUND**

S-adenosyl-L-methionine-dependent 2'-O-ribose methyltransferase that catalyzes the formation of 2'-O-methylguanosine at position 1370 (Gm1370) in the 16S mitochondrial large subunit ribosomal RNA (mtLSU rRNA), a conserved modification in the peptidyl transferase domain of the mtLSU rRNA in the 16S mitochondrial large subunit ribosomal RNA (mtLSU rRNA), a conserved modification in the peptidyl transferase domain of the mtLSU rRNA . Also required for formation of 2'-O-methyluridine at position 1369 (Um1369) mediated by MRM2 .

**APPLICATION**

To ensure optimal assay performance, AREX recommends conducting reagent titration tailored to each testing system for optimal detection results.

WB	1:500 - 1:2000
----	----------------

\*Results are sample-specific. Please refer to your local assay conditions and test parameters for reference.

**PRODUCT OVERVIEW**

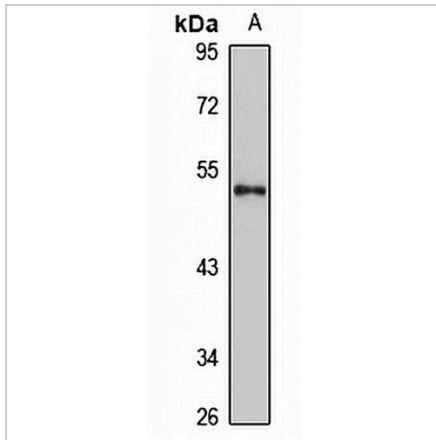
Description	Rabbit polyclonal antibody to RNMTL1
Specificity	Recognizes endogenous levels of RNMTL1 protein
Antibody Type	Primary antibody
Immunogen	Recombinant fusion protein of human RNMTL1. The exact sequence is proprietary.
Purification	The antibody was purified by immunogen affinity chromatography.
Molecular Weight	Predicted: 47 kD; Observed: 47 kD
Form/Buffer	Liquid in 0.42% Potassium phosphate, 0.87% Sodium chloride, pH 7.3, 30% glycerol, and 0.01% sodium azide.
Alternative Names	RNA methyltransferase-like protein 1
Gene Symbol	RNMTL1
Entrez Gene	55178(Human); 67390(Mouse)
SwissProt	Q9HC36(Human); Q5ND52(Mouse)

\*AREX continuously optimizes our products. Webpage content may not reflect the latest updates. For inquiries, please contact [info@arexbio.com](mailto:info@arexbio.com) or your local distributor.

\*Clone Number, Reactivity, Source/Host and Clonality can be found in the product name and Key Features section above.

**DATASHEET****RNMTL1 Rabbit Polyclonal Antibody**

CAT. NO. APA16740

**DATA**

Western blot analysis of RNMTL1 expression in HepG2 (A) whole cell lysates. (Predicted band size: 47 kD; Observed band size: 47 kD)

**STORAGE**

Store at 4°C short term. For long term storage, store at -20°C, avoiding freeze/thaw cycles.

**NOTE**

For Research Use Only. Not for diagnostic, therapeutics, prophylactic or in vivo use.