

**DATASHEET**

**Aminopeptidase B Rabbit Polyclonal Antibody**

CAT. NO. APA16742

**KEY FEATURES**

Target	Aminopeptidase B	Source / Host	Rabbit
Reactivity	Human, Mouse, Rat	Clonality	Polyclonal
Applications	WB	Conjugation	Unconjugated
Form / Buffer	Liquid in 0.42% Potassium phosphate, 0.87% Sodium chloride, pH 7.3, 30% glycerol, and 0.01% sodium azide.		Storage at -20°C

**BACKGROUND**

Exopeptidase which selectively removes arginine and/or lysine residues from the N-terminus of several peptide substrates including Arg(0)-Leu-enkephalin, Arg(0)-Met-enkephalin and Arg(-1)-Lys(0)-somatostatin-14. Can hydrolyze leukotriene A4 (LTA-4) into leukotriene B4 (LTB-4) .

**APPLICATION**

To ensure optimal assay performance, AREX recommends conducting reagent titration tailored to each testing system for optimal detection results.

WB	1:500 - 1:2000
----	----------------

\*Results are sample-specific. Please refer to your local assay conditions and test parameters for reference.

**PRODUCT OVERVIEW**

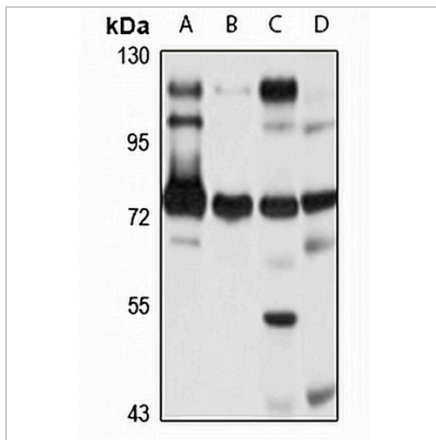
Description	Rabbit polyclonal antibody to Aminopeptidase B
Specificity	Recognizes endogenous levels of Aminopeptidase B protein
Antibody Type	Primary antibody
Immunogen	Recombinant fusion protein of human Aminopeptidase B. The exact sequence is proprietary.
Purification	The antibody was purified by immunogen affinity chromatography.
Molecular Weight	Predicted: 72 kD; Observed: 80 kD
Form/Buffer	Liquid in 0.42% Potassium phosphate, 0.87% Sodium chloride, pH 7.3, 30% glycerol, and 0.01% sodium azide.
Alternative Names	APB; Aminopeptidase B; AP-B; Arginine aminopeptidase; Arginyl aminopeptidase
Gene Symbol	RNPEP
Entrez Gene	6051(Human); 215615(Mouse); 81761(Rat)
SwissProt	Q9H4A4(Human); Q8VCT3(Mouse); O09175(Rat)

\*AREX continuously optimizes our products. Webpage content may not reflect the latest updates. For inquiries, please contact [info@arexbio.com](mailto:info@arexbio.com) or your local distributor.

\*Clone Number, Reactivity, Source/Host and Clonality can be found in the product name and Key Features section above.

**DATASHEET****Aminopeptidase B Rabbit Polyclonal Antibody**

CAT. NO. APA16742

**DATA**

Western blot analysis of Aminopeptidase B expression in HepG2 (A), HeLa (B), mouse kidney (C), rat liver (D) whole cell lysates. (Predicted band size: 72 kD; Observed band size: 80 kD)

**STORAGE**

Store at 4°C short term. For long term storage, store at -20°C, avoiding freeze/thaw cycles.

**NOTE**

For Research Use Only. Not for diagnostic, therapeutics, prophylactic or in vivo use.