

**DATASHEET**

**RPE Rabbit Polyclonal Antibody**

CAT. NO. APA16744

**KEY FEATURES**

Target	RPE	Source / Host	Rabbit
Reactivity	Human, Mouse, Rat	Clonality	Polyclonal
Applications	WB, IHC, IF/ICC	Conjugation	Unconjugated
Form / Buffer	Liquid in 0.42% Potassium phosphate, 0.87% Sodium chloride, pH 7.3, 30% glycerol, and 0.01% sodium azide.		Storage at -20°C

**BACKGROUND**

Catalyzes the reversible epimerization of D-ribulose 5-phosphate to D-xylulose 5-phosphate.

**APPLICATION**

To ensure optimal assay performance, AREX recommends conducting reagent titration tailored to each testing system for optimal detection results.

WB	1:500 - 1:2000
IHC	1:50 - 1:200
IF/ICC	1:50 - 1:200

\*Results are sample-specific. Please refer to your local assay conditions and test parameters for reference.

**PRODUCT OVERVIEW**

Description	Rabbit polyclonal antibody to RPE
Specificity	Recognizes endogenous levels of RPE protein
Antibody Type	Primary antibody
Immunogen	Recombinant fusion protein of human RPE. The exact sequence is proprietary.
Purification	The antibody was purified by immunogen affinity chromatography.
Molecular Weight	Predicted: 17; Observed: 25 kD
Form/Buffer	Liquid in 0.42% Potassium phosphate, 0.87% Sodium chloride, pH 7.3, 30% glycerol, and 0.01% sodium azide.
Alternative Names	Ribulose-phosphate 3-epimerase; Ribulose-5-phosphate-3-epimerase
Gene Symbol	RPE
Entrez Gene	6120(Human); 66646(Mouse)
SwissProt	Q96AT9(Human); Q8VEE0(Mouse)

\*AREX continuously optimizes our products. Webpage content may not reflect the latest updates. For inquiries, please contact [info@arexbio.com](mailto:info@arexbio.com) or your local distributor.

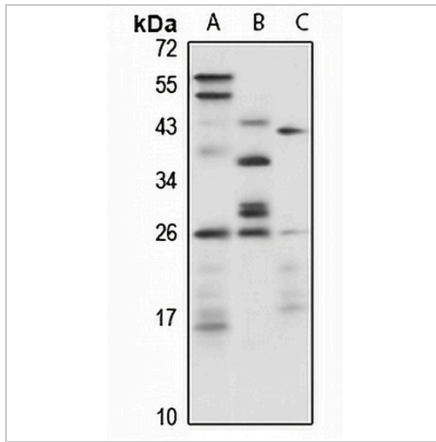
\*Clone Number, Reactivity, Source/Host and Clonality can be found in the product name and Key Features section above.

**DATASHEET**

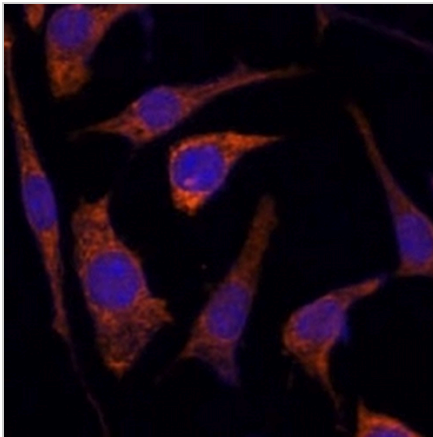
**RPE Rabbit Polyclonal Antibody**

CAT. NO. APA16744

**DATA**



Western blot analysis of RPE expression in HeLa (A), mouse heart (B), rat brain (C) whole cell lysates. (Predicted band size: 17; 19; 21; 23; 24 kD; Observed band size: 25 kD)



Immunofluorescent analysis of RPE staining in L929 cells. Formalin-fixed cells were permeabilized with 0.1% Triton X-100 in TBS for 5-10 minutes and blocked with 3% BSA-PBS for 30 minutes at room temperature. Cells were probed with the primary antibody in 3% BSA-PBS and incubated overnight at 4 °C in a humidified chamber. Cells were washed with PBST and incubated with a Alexa Fluor 594-conjugated secondary antibody (red) in PBS at room temperature in the dark.

**STORAGE**

Store at 4°C short term. For long term storage, store at -20°C, avoiding freeze/thaw cycles.

**NOTE**

For Research Use Only. Not for diagnostic, therapeutics, prophylactic or in vivo use.