

## DATASHEET

# RPGRIP1 Rabbit Polyclonal Antibody

CAT. NO. APA16746

### KEY FEATURES

Target	RPGRIP1	Source / Host	Rabbit
Reactivity	Human, Mouse	Clonality	Polyclonal
Applications	WB	Conjugation	Unconjugated
Form / Buffer	Liquid in 0.42% Potassium phosphate, 0.87% Sodium chloride, pH 7.3, 30% glycerol, and 0.01% sodium azide.		Storage at -20°C

### BACKGROUND

May function as scaffolding protein. Required for normal location of RPGR at the connecting cilium of photoreceptor cells. Required for normal disk morphogenesis and disk organization in the outer segment of photoreceptor cells and for survival of photoreceptor cells.

### APPLICATION

To ensure optimal assay performance, AREX recommends conducting reagent titration tailored to each testing system for optimal detection results.

WB	1:500 - 1:2000
----	----------------

\*Results are sample-specific. Please refer to your local assay conditions and test parameters for reference.

### PRODUCT OVERVIEW

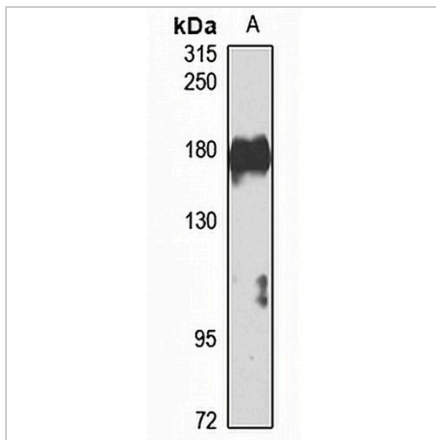
Description	Rabbit polyclonal antibody to RPGRIP1
Specificity	Recognizes endogenous levels of RPGRIP1 protein
Antibody Type	Primary antibody
Immunogen	Recombinant fusion protein of human RPGRIP1. The exact sequence is proprietary.
Purification	The antibody was purified by immunogen affinity chromatography.
Molecular Weight	Predicted: 66; Observed: 170 kD
Form/Buffer	Liquid in 0.42% Potassium phosphate, 0.87% Sodium chloride, pH 7.3, 30% glycerol, and 0.01% sodium azide.
Alternative Names	X-linked retinitis pigmentosa GTPase regulator-interacting protein 1; RPGR-interacting protein 1
Gene Symbol	RPGRIP1
Entrez Gene	57096(Human); 77945(Mouse)
SwissProt	Q96KN7(Human); Q9EPQ2(Mouse)

\*AREX continuously optimizes our products. Webpage content may not reflect the latest updates. For inquiries, please contact [info@arexbio.com](mailto:info@arexbio.com) or your local distributor.

\*Clone Number, Reactivity, Source/Host and Clonality can be found in the product name and Key Features section above.

**DATASHEET****RPGRIP1 Rabbit Polyclonal Antibody**

CAT. NO. APA16746

**DATA**

Western blot analysis of RPGRIP1 expression in HL60 (A) whole cell lysates. (Predicted band size: 66; 70; 74; 76; 103; 146 kD; Observed band size: 170 kD)

**STORAGE**

Store at 4°C short term. For long term storage, store at -20°C, avoiding freeze/thaw cycles.

**NOTE**

For Research Use Only. Not for diagnostic, therapeutics, prophylactic or in vivo use.