

DATASHEET

Ribosomal Protein L6 Rabbit Polyclonal Antibody

CAT. NO. APA16754

KEY FEATURES

Target	Ribosomal Protein L6	Source / Host	Rabbit
Reactivity	Human, Mouse, Rat	Clonality	Polyclonal
Applications	WB, IF/ICC	Conjugation	Unconjugated
Form / Buffer	Liquid in 0.42% Potassium phosphate, 0.87% Sodium chloride, pH 7.3, 30% glycerol, and 0.01% sodium azide.		Storage at -20°C

BACKGROUND

Component of the large ribosomal subunit . The ribosome is a large ribonucleoprotein complex responsible for the synthesis of proteins in the cell .

APPLICATION

To ensure optimal assay performance, AREX recommends conducting reagent titration tailored to each testing system for optimal detection results.

WB	1:500 - 1:2000
IF/ICC	1:50 - 1:200

*Results are sample-specific. Please refer to your local assay conditions and test parameters for reference.

PRODUCT OVERVIEW

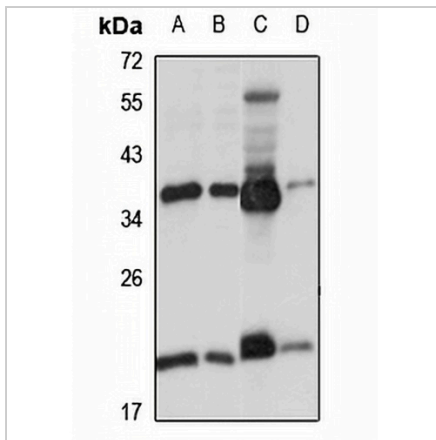
Description	Rabbit polyclonal antibody to Ribosomal Protein L6
Specificity	Recognizes endogenous levels of Ribosomal Protein L6 protein
Antibody Type	Primary antibody
Immunogen	Recombinant fusion protein of human Ribosomal Protein L6. The exact sequence is proprietary.
Purification	The antibody was purified by immunogen affinity chromatography.
Molecular Weight	Predicted: 32 kD; Observed: 38 kD
Form/Buffer	Liquid in 0.42% Potassium phosphate, 0.87% Sodium chloride, pH 7.3, 30% glycerol, and 0.01% sodium azide.
Alternative Names	TXREB1; 60S ribosomal protein L6; Neoplasm-related protein C140; Tax-responsive enhancer element-binding protein 107; TaxREB107
Gene Symbol	RPL6
Entrez Gene	6128(Human); 19988(Mouse); 117042(Rat)
SwissProt	Q02878(Human); P47911(Mouse); P21533(Rat)

*AREX continuously optimizes our products. Webpage content may not reflect the latest updates. For inquiries, please contact info@arexbio.com or your local distributor.

*Clone Number, Reactivity, Source/Host and Clonality can be found in the product name and Key Features section above.

DATASHEET**Ribosomal Protein L6 Rabbit Polyclonal Antibody**

CAT. NO. APA16754

DATA

Western blot analysis of Ribosomal Protein L6 expression in A549 (A), HeLa (B), mouse liver (C), rat lung (D) whole cell lysates. (Predicted band size: 32 kDa; Observed band size: 38 kDa)

STORAGE

Store at 4°C short term. For long term storage, store at -20°C, avoiding freeze/thaw cycles.

NOTE

For Research Use Only. Not for diagnostic, therapeutics, prophylactic or in vivo use.