

DATASHEET

RPL7A Rabbit Polyclonal Antibody

CAT. NO. APA16755

KEY FEATURES

Target	RPL7A	Source / Host	Rabbit
Reactivity	Human, Mouse, Rat	Clonality	Polyclonal
Applications	WB, IF/ICC	Conjugation	Unconjugated
Form / Buffer	Liquid in 0.42% Potassium phosphate, 0.87% Sodium chloride, pH 7.3, 30% glycerol, and 0.01% sodium azide.		Storage at -20°C

BACKGROUND

Component of the large ribosomal subunit . The ribosome is a large ribonucleoprotein complex responsible for the synthesis of proteins in the cell .

APPLICATION

To ensure optimal assay performance, AREX recommends conducting reagent titration tailored to each testing system for optimal detection results.

WB	1:500 - 1:1000
IF/ICC	1:50 - 1:200

*Results are sample-specific. Please refer to your local assay conditions and test parameters for reference.

PRODUCT OVERVIEW

Description	Rabbit polyclonal antibody to RPL7A
Specificity	Recognizes endogenous levels of RPL7A protein
Antibody Type	Primary antibody
Immunogen	Recombinant fusion protein of human RPL7A. The exact sequence is proprietary.
Purification	The antibody was purified by immunogen affinity chromatography.
Molecular Weight	Predicted: 29 kD; Observed: 35 kD
Form/Buffer	Liquid in 0.42% Potassium phosphate, 0.87% Sodium chloride, pH 7.3, 30% glycerol, and 0.01% sodium azide.
Alternative Names	SURF-3; SURF3; 60S ribosomal protein L7a; PLA-X polypeptide; Surfeit locus protein 3
Gene Symbol	RPL7A
Entrez Gene	6130(Human); 27176(Mouse); 296596(Rat)
SwissProt	P62424(Human); P12970(Mouse); P62425(Rat)

*AREX continuously optimizes our products. Webpage content may not reflect the latest updates. For inquiries, please contact info@arexbio.com or your local distributor.

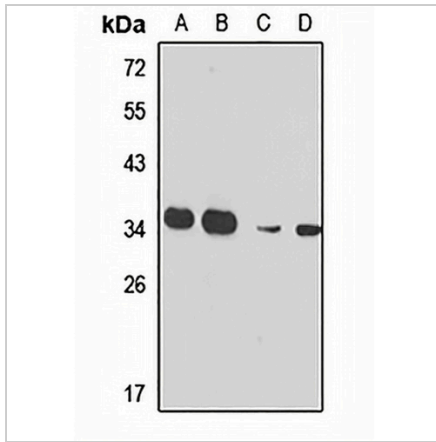
*Clone Number, Reactivity, Source/Host and Clonality can be found in the product name and Key Features section above.

DATASHEET

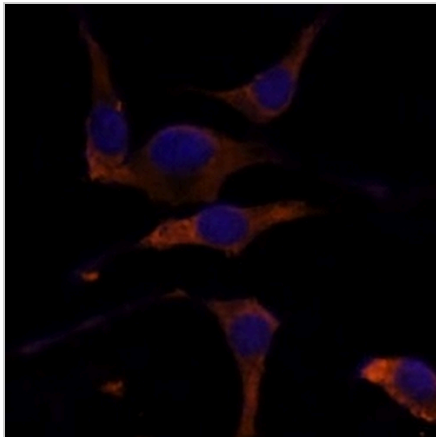
RPL7A Rabbit Polyclonal Antibody

CAT. NO. APA16755

DATA



Western blot analysis of RPL7A expression in A431 (A), HeLa (B), mouse kidney (C), mouse liver (D) whole cell lysates. (Predicted band size: 29 kD; Observed band size: 35 kD)



Immunofluorescent analysis of RPL7A staining in L929 cells. Formalin-fixed cells were permeabilized with 0.1% Triton X-100 in TBS for 5-10 minutes and blocked with 3% BSA-PBS for 30 minutes at room temperature. Cells were probed with the primary antibody in 3% BSA-PBS and incubated overnight at 4 °C in a humidified chamber. Cells were washed with PBST and incubated with a Alexa Fluor 594-conjugated secondary antibody (red) in PBS at room temperature in the dark.

STORAGE

Store at 4°C short term. For long term storage, store at -20°C, avoiding freeze/thaw cycles.

NOTE

For Research Use Only. Not for diagnostic, therapeutics, prophylactic or in vivo use.