

DATASHEET

RPP21 Rabbit Polyclonal Antibody

CAT. NO. APA16756

KEY FEATURES

Target	RPP21	Source / Host	Rabbit
Reactivity	Human, Mouse	Clonality	Polyclonal
Applications	WB	Conjugation	Unconjugated
Form / Buffer	Liquid in 0.42% Potassium phosphate, 0.87% Sodium chloride, pH 7.3, 30% glycerol, and 0.01% sodium azide.		Storage at -20°C

BACKGROUND

Component of ribonuclease P, a ribonucleoprotein complex that generates mature tRNA molecules by cleaving their 5'-ends.

APPLICATION

To ensure optimal assay performance, AREX recommends conducting reagent titration tailored to each testing system for optimal detection results.

WB	1:500 - 1:2000
----	----------------

*Results are sample-specific. Please refer to your local assay conditions and test parameters for reference.

PRODUCT OVERVIEW

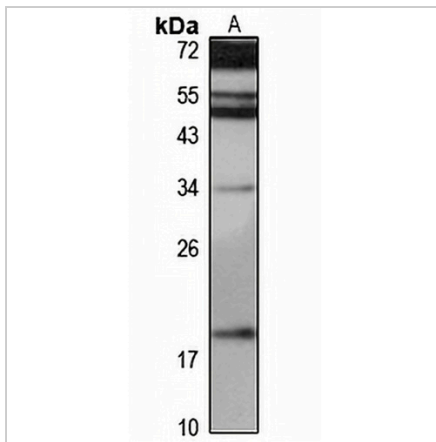
Description	Rabbit polyclonal antibody to RPP21
Specificity	Recognizes endogenous levels of RPP21 protein
Antibody Type	Primary antibody
Immunogen	Recombinant fusion protein of human RPP21. The exact sequence is proprietary.
Purification	The antibody was purified by immunogen affinity chromatography.
Molecular Weight	Predicted: 16; Observed: 18 kD
Form/Buffer	Liquid in 0.42% Potassium phosphate, 0.87% Sodium chloride, pH 7.3, 30% glycerol, and 0.01% sodium azide.
Alternative Names	C6orf135; CAT60; Ribonuclease P protein subunit p21; RNaseP protein p21; Ribonuclease P/MRP 21 kDa subunit; Ribonucleoprotein V
Gene Symbol	RPP21
Entrez Gene	79897(Human); 67676(Mouse)
SwissProt	Q9H633(Human); Q8R040(Mouse)

*AREX continuously optimizes our products. Webpage content may not reflect the latest updates. For inquiries, please contact info@arexbio.com or your local distributor.

*Clone Number, Reactivity, Source/Host and Clonality can be found in the product name and Key Features section above.

DATASHEET**RPP21 Rabbit Polyclonal Antibody**

CAT. NO. APA16756

DATA

Western blot analysis of RPP21 expression in A431 (A) whole cell lysates. (Predicted band size: 16; 17; 18; 20 kD; Observed band size: 18 kD)

STORAGE

Store at 4°C short term. For long term storage, store at -20°C, avoiding freeze/thaw cycles.

NOTE

For Research Use Only. Not for diagnostic, therapeutics, prophylactic or in vivo use.