

## DATASHEET

# RPP38 Rabbit Polyclonal Antibody

CAT. NO. APA16758

### KEY FEATURES

Target	RPP38	Source / Host	Rabbit
Reactivity	Human	Clonality	Polyclonal
Applications	WB	Conjugation	Unconjugated
Form / Buffer	Liquid in 0.42% Potassium phosphate, 0.87% Sodium chloride, pH 7.3, 30% glycerol, and 0.01% sodium azide.		Storage at -20°C

### BACKGROUND

Component of ribonuclease P, a ribonucleoprotein complex that generates mature tRNA molecules by cleaving their 5'-ends . Also a component of the MRP ribonuclease complex, which cleaves pre-rRNA sequences .

### APPLICATION

To ensure optimal assay performance, AREX recommends conducting reagent titration tailored to each testing system for optimal detection results.

WB	1:500 - 1:1000
----	----------------

\*Results are sample-specific. Please refer to your local assay conditions and test parameters for reference.

### PRODUCT OVERVIEW

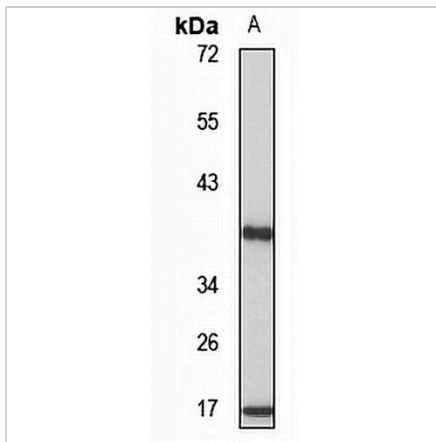
Description	Rabbit polyclonal antibody to RPP38
Specificity	Recognizes endogenous levels of RPP38 protein
Antibody Type	Primary antibody
Immunogen	Recombinant fusion protein of human RPP38. The exact sequence is proprietary.
Purification	The antibody was purified by immunogen affinity chromatography.
Molecular Weight	Predicted: 31 kD; Observed: 38 kD
Form/Buffer	Liquid in 0.42% Potassium phosphate, 0.87% Sodium chloride, pH 7.3, 30% glycerol, and 0.01% sodium azide.
Alternative Names	Ribonuclease P protein subunit p38; RNaseP protein p38
Gene Symbol	RPP38
Entrez Gene	10557(Human)
SwissProt	P78345(Human)

\*AREX continuously optimizes our products. Webpage content may not reflect the latest updates. For inquiries, please contact [info@arexbio.com](mailto:info@arexbio.com) or your local distributor.

\*Clone Number, Reactivity, Source/Host and Clonality can be found in the product name and Key Features section above.

**DATASHEET****RPP38 Rabbit Polyclonal Antibody**

CAT. NO. APA16758

**DATA**

Western blot analysis of RPP38 expression in K562 (A) whole cell lysates. (Predicted band size: 31 kD; Observed band size: 38 kD)

**STORAGE**

Store at 4°C short term. For long term storage, store at -20°C, avoiding freeze/thaw cycles.

**NOTE**

For Research Use Only. Not for diagnostic, therapeutics, prophylactic or in vivo use.