

DATASHEET

RPP40 Rabbit Polyclonal Antibody

CAT. NO. APA16759

KEY FEATURES

Target	RPP40	Source / Host	Rabbit
Reactivity	Human, Mouse, Rat	Clonality	Polyclonal
Applications	WB	Conjugation	Unconjugated
Form / Buffer	Liquid in 0.42% Potassium phosphate, 0.87% Sodium chloride, pH 7.3, 30% glycerol, and 0.01% sodium azide.		Storage at -20°C

BACKGROUND

Component of ribonuclease P, a ribonucleoprotein complex that generates mature tRNA molecules by cleaving their 5'-ends . Also a component of the MRP ribonuclease complex, which cleaves pre-rRNA sequences .

APPLICATION

To ensure optimal assay performance, AREX recommends conducting reagent titration tailored to each testing system for optimal detection results.

WB	1:500 - 1:2000
----	----------------

*Results are sample-specific. Please refer to your local assay conditions and test parameters for reference.

PRODUCT OVERVIEW

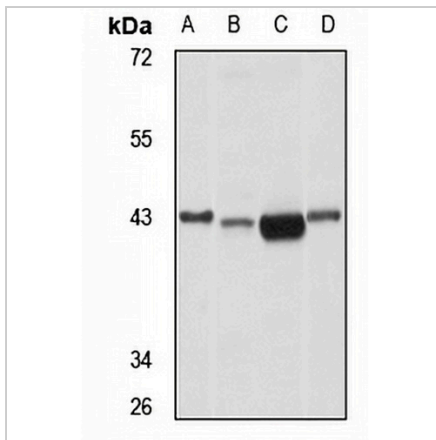
Description	Rabbit polyclonal antibody to RPP40
Specificity	Recognizes endogenous levels of RPP40 protein
Antibody Type	Primary antibody
Immunogen	Recombinant fusion protein of human RPP40. The exact sequence is proprietary.
Purification	The antibody was purified by immunogen affinity chromatography.
Molecular Weight	Predicted: 41 kD; Observed: 42 kD
Form/Buffer	Liquid in 0.42% Potassium phosphate, 0.87% Sodium chloride, pH 7.3, 30% glycerol, and 0.01% sodium azide.
Alternative Names	RNASEP1; Ribonuclease P protein subunit p40; RNaseP protein p40; RNase P subunit 1
Gene Symbol	RPP40
Entrez Gene	10799(Human); 208366(Mouse); 291071(Rat)
SwissProt	O75818(Human); Q8R1F9(Mouse); Q5BK64(Rat)

*AREX continuously optimizes our products. Webpage content may not reflect the latest updates. For inquiries, please contact info@arexbio.com or your local distributor.

*Clone Number, Reactivity, Source/Host and Clonality can be found in the product name and Key Features section above.

DATASHEET**RPP40 Rabbit Polyclonal Antibody**

CAT. NO. APA16759

DATA

Western blot analysis of RPP40 expression in U87MG (A), mouse kidney (B), mouse liver (C), rat lung (D) whole cell lysates. (Predicted band size: 41 kD; Observed band size: 42 kD)

STORAGE

Store at 4°C short term. For long term storage, store at -20°C, avoiding freeze/thaw cycles.

NOTE

For Research Use Only. Not for diagnostic, therapeutics, prophylactic or in vivo use.