

DATASHEET

RPRD1A Rabbit Polyclonal Antibody

CAT. NO. APA16760

KEY FEATURES

Target	RPRD1A	Source / Host	Rabbit
Reactivity	Human, Mouse, Rat	Clonality	Polyclonal
Applications	WB	Conjugation	Unconjugated
Form / Buffer	Liquid in 0.42% Potassium phosphate, 0.87% Sodium chloride, pH 7.3, 30% glycerol, and 0.01% sodium azide.		Storage at -20°C

BACKGROUND

Interacts with phosphorylated C-terminal heptapeptide repeat domain (CTD) of the largest RNA polymerase II subunit POLR2A, and participates in dephosphorylation of the CTD by RPAP2. May act as a negative regulator of cyclin-D1 (CCND1) and cyclin-E (CCNE1) in the cell cycle.

APPLICATION

To ensure optimal assay performance, AREX recommends conducting reagent titration tailored to each testing system for optimal detection results.

WB	1:500 - 1:2000
----	----------------

*Results are sample-specific. Please refer to your local assay conditions and test parameters for reference.

PRODUCT OVERVIEW

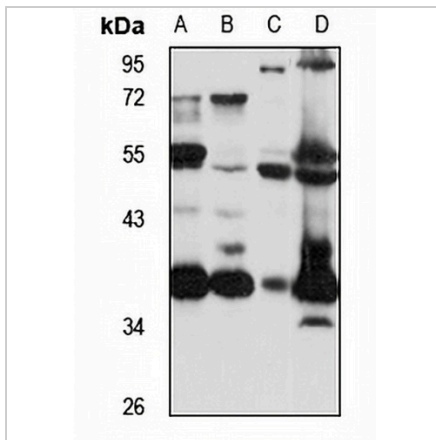
Description	Rabbit polyclonal antibody to RPRD1A
Specificity	Recognizes endogenous levels of RPRD1A protein
Antibody Type	Primary antibody
Immunogen	Recombinant fusion protein of human RPRD1A. The exact sequence is proprietary.
Purification	The antibody was purified by immunogen affinity chromatography.
Molecular Weight	Predicted: 31; Observed: 36 kD
Form/Buffer	Liquid in 0.42% Potassium phosphate, 0.87% Sodium chloride, pH 7.3, 30% glycerol, and 0.01% sodium azide.
Alternative Names	P15RS; Regulation of nuclear pre-mRNA domain-containing protein 1A; Cyclin-dependent kinase inhibitor 2B-related protein; p15INK4B-related protein
Gene Symbol	RPRD1A
Entrez Gene	55197(Human); 225283(Mouse)
SwissProt	Q96P16(Human); Q8VDS4(Mouse)

*AREX continuously optimizes our products. Webpage content may not reflect the latest updates. For inquiries, please contact info@arexbio.com or your local distributor.

*Clone Number, Reactivity, Source/Host and Clonality can be found in the product name and Key Features section above.

DATASHEET**RPRD1A Rabbit Polyclonal Antibody**

CAT. NO. APA16760

DATA

Western blot analysis of RPRD1A expression in HeLa (A), A431 (B), mouse liver (C), rat brain (D) whole cell lysates. (Predicted band size: 31; 35 kD; Observed band size: 36 kD)

STORAGE

Store at 4°C short term. For long term storage, store at -20°C, avoiding freeze/thaw cycles.

NOTE

For Research Use Only. Not for diagnostic, therapeutics, prophylactic or in vivo use.