

DATASHEET

Ribosomal Protein S26 Rabbit Polyclonal Antibody

CAT. NO. APA16762

KEY FEATURES

Target	Ribosomal Protein S26	Source / Host	Rabbit
Reactivity	Human, Mouse, Rat	Clonality	Polyclonal
Applications	WB	Conjugation	Unconjugated
Form / Buffer	Liquid in 0.42% Potassium phosphate, 0.87% Sodium chloride, pH 7.3, 30% glycerol, and 0.01% sodium azide.		Storage at -20°C

BACKGROUND

Component of the small ribosomal subunit . The ribosome is a large ribonucleoprotein complex responsible for the synthesis of proteins in the cell .

APPLICATION

To ensure optimal assay performance, AREX recommends conducting reagent titration tailored to each testing system for optimal detection results.

WB	1:500 - 1:2000
----	----------------

*Results are sample-specific. Please refer to your local assay conditions and test parameters for reference.

PRODUCT OVERVIEW

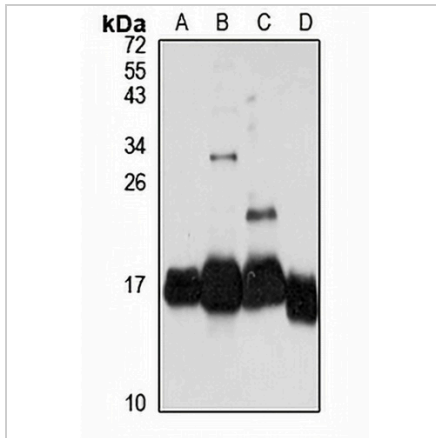
Description	Rabbit polyclonal antibody to Ribosomal Protein S26
Specificity	Recognizes endogenous levels of Ribosomal Protein S26 protein
Antibody Type	Primary antibody
Immunogen	KLH-conjugated synthetic peptide of human Ribosomal Protein S26 . The exact sequence is proprietary.
Purification	The antibody was purified by immunogen affinity chromatography.
Molecular Weight	Predicted: 13 kD; Observed: 15 kD
Form/Buffer	Liquid in 0.42% Potassium phosphate, 0.87% Sodium chloride, pH 7.3, 30% glycerol, and 0.01% sodium azide.
Alternative Names	40S ribosomal protein S26
Gene Symbol	RPS26
Entrez Gene	101929876; 6231(Human); 27370(Mouse); 27139(Rat)
SwissProt	P62854(Human); P62855(Mouse); P62856(Rat)

*AREX continuously optimizes our products. Webpage content may not reflect the latest updates. For inquiries, please contact info@arexbio.com or your local distributor.

*Clone Number, Reactivity, Source/Host and Clonality can be found in the product name and Key Features section above.

DATASHEET**Ribosomal Protein S26 Rabbit Polyclonal Antibody**

CAT. NO. APA16762

DATA

Western blot analysis of Ribosomal Protein S26 expression in LO2 (A), Raji (B), mouse brain (C), mouse heart (D) whole cell lysates. (Predicted band size: 13 kD; Observed band size: 15 kD)

STORAGE

Store at 4°C short term. For long term storage, store at -20°C, avoiding freeze/thaw cycles.

NOTE

For Research Use Only. Not for diagnostic, therapeutics, prophylactic or in vivo use.