

**DATASHEET**

**RRP36 Rabbit Polyclonal Antibody**

CAT. NO. APA16767

**KEY FEATURES**

Target	RRP36	Source / Host	Rabbit
Reactivity	Human, Mouse	Clonality	Polyclonal
Applications	WB	Conjugation	Unconjugated
Form / Buffer	Liquid in 0.42% Potassium phosphate, 0.87% Sodium chloride, pH 7.3, 30% glycerol, and 0.01% sodium azide.		Storage at -20°C

**BACKGROUND**

Involved in the early processing steps of the pre-rRNA in the maturation pathway leading to the 18S rRNA.

**APPLICATION**

To ensure optimal assay performance, AREX recommends conducting reagent titration tailored to each testing system for optimal detection results.

WB	1:500 - 1:2000
----	----------------

\*Results are sample-specific. Please refer to your local assay conditions and test parameters for reference.

**PRODUCT OVERVIEW**

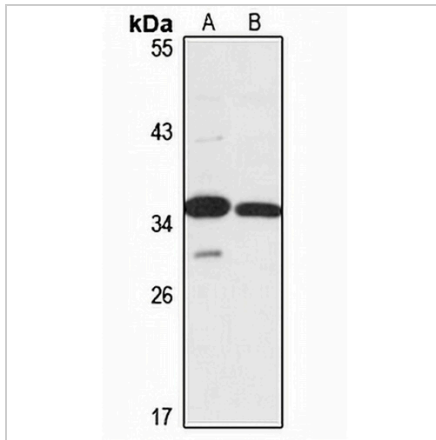
Description	Rabbit polyclonal antibody to RRP36
Specificity	Recognizes endogenous levels of RRP36 protein
Antibody Type	Primary antibody
Immunogen	Recombinant fusion protein of human RRP36. The exact sequence is proprietary.
Purification	The antibody was purified by immunogen affinity chromatography.
Molecular Weight	Predicted: 29 kD; Observed: 36 kD
Form/Buffer	Liquid in 0.42% Potassium phosphate, 0.87% Sodium chloride, pH 7.3, 30% glycerol, and 0.01% sodium azide.
Alternative Names	C6orf153; Ribosomal RNA processing protein 36 homolog
Gene Symbol	RRP36
Entrez Gene	88745(Human); 224823(Mouse)
SwissProt	Q96EU6(Human); Q3UFY0(Mouse)

\*AREX continuously optimizes our products. Webpage content may not reflect the latest updates. For inquiries, please contact [info@arexbio.com](mailto:info@arexbio.com) or your local distributor.

\*Clone Number, Reactivity, Source/Host and Clonality can be found in the product name and Key Features section above.

**DATASHEET****RRP36 Rabbit Polyclonal Antibody**

CAT. NO. APA16767

**DATA**

Western blot analysis of RRP36 expression in HEK293T (A), HeLa (B) whole cell lysates.  
(Predicted band size: 29 kD; Observed band size: 36 kD)

**STORAGE**

Store at 4°C short term. For long term storage, store at -20°C, avoiding freeze/thaw cycles.

**NOTE**

For Research Use Only. Not for diagnostic, therapeutics, prophylactic or in vivo use.