

**DATASHEET**

**RSL24D1 Rabbit Polyclonal Antibody**

CAT. NO. APA16768

**KEY FEATURES**

Target	RSL24D1	Source / Host	Rabbit
Reactivity	Human, Mouse, Rat	Clonality	Polyclonal
Applications	WB	Conjugation	Unconjugated
Form / Buffer	Liquid in 0.42% Potassium phosphate, 0.87% Sodium chloride, pH 7.3, 30% glycerol, and 0.01% sodium azide.		Storage at -20°C

**BACKGROUND**

Involved in the biogenesis of the 60S ribosomal subunit. Ensures the docking of GTPBP4/NOG1 to pre-60S particles .

**APPLICATION**

To ensure optimal assay performance, AREX recommends conducting reagent titration tailored to each testing system for optimal detection results.

WB	1:500 - 1:2000
----	----------------

\*Results are sample-specific. Please refer to your local assay conditions and test parameters for reference.

**PRODUCT OVERVIEW**

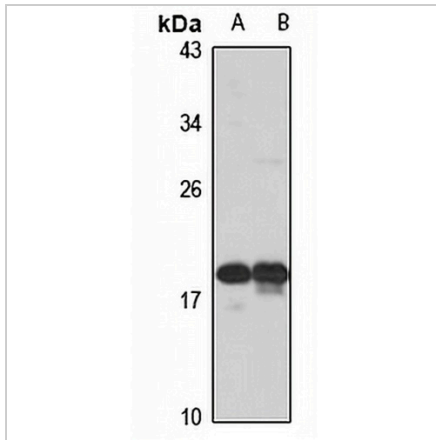
Description	Rabbit polyclonal antibody to RSL24D1
Specificity	Recognizes endogenous levels of RSL24D1 protein
Antibody Type	Primary antibody
Immunogen	Recombinant fusion protein of human RSL24D1. The exact sequence is proprietary.
Purification	The antibody was purified by immunogen affinity chromatography.
Molecular Weight	Predicted: 19 kD; Observed: 20 kD
Form/Buffer	Liquid in 0.42% Potassium phosphate, 0.87% Sodium chloride, pH 7.3, 30% glycerol, and 0.01% sodium azide.
Alternative Names	C15orf15; RPL24L; Probable ribosome biogenesis protein RLP24; Ribosomal L24 domain-containing protein 1; Ribosomal protein L24-like
Gene Symbol	RSL24D1
Entrez Gene	51187(Human); 225215(Mouse); 363099(Rat)
SwissProt	Q9UHA3(Human); Q99L28(Mouse); Q6P6G7(Rat)

\*AREX continuously optimizes our products. Webpage content may not reflect the latest updates. For inquiries, please contact [info@arexbio.com](mailto:info@arexbio.com) or your local distributor.

\*Clone Number, Reactivity, Source/Host and Clonality can be found in the product name and Key Features section above.

**DATASHEET****RSL24D1 Rabbit Polyclonal Antibody**

CAT. NO. APA16768

**DATA**

Western blot analysis of RSL24D1 expression in HepG2 (A), mouse spleen (B) whole cell lysates. (Predicted band size: 19 kD; Observed band size: 20 kD)

**STORAGE**

Store at 4°C short term. For long term storage, store at -20°C, avoiding freeze/thaw cycles.

**NOTE**

For Research Use Only. Not for diagnostic, therapeutics, prophylactic or in vivo use.