

**DATASHEET**

**RSPH9 Rabbit Polyclonal Antibody**

CAT. NO. APA16769

**KEY FEATURES**

Target	RSPH9	Source / Host	Rabbit
Reactivity	Human, Mouse, Rat	Clonality	Polyclonal
Applications	WB	Conjugation	Unconjugated
Form / Buffer	Liquid in 0.42% Potassium phosphate, 0.87% Sodium chloride, pH 7.3, 30% glycerol, and 0.01% sodium azide.		Storage at -20°C

**BACKGROUND**

Functions as part of axonemal radial spoke complexes that play an important part in the motility of sperm and cilia . Essential for both the radial spoke head assembly and the central pair microtubule stability in ependymal motile cilia . Required for motility of olfactory and neural cilia and for the structural integrity of ciliary axonemes in both 9+0 and 9+2 motile cilia .

**APPLICATION**

To ensure optimal assay performance, AREX recommends conducting reagent titration tailored to each testing system for optimal detection results.

WB	1:500 - 1:2000
----	----------------

\*Results are sample-specific. Please refer to your local assay conditions and test parameters for reference.

**PRODUCT OVERVIEW**

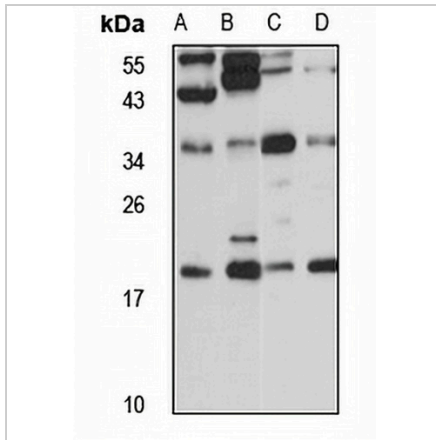
Description	Rabbit polyclonal antibody to RSPH9
Specificity	Recognizes endogenous levels of RSPH9 protein
Antibody Type	Primary antibody
Immunogen	Recombinant fusion protein of human RSPH9. The exact sequence is proprietary.
Purification	The antibody was purified by immunogen affinity chromatography.
Molecular Weight	Predicted: 31; Observed: 36 kD
Form/Buffer	Liquid in 0.42% Potassium phosphate, 0.87% Sodium chloride, pH 7.3, 30% glycerol, and 0.01% sodium azide.
Alternative Names	C6orf206; MRPS18AL1; Radial spoke head protein 9 homolog
Gene Symbol	RSPH9
Entrez Gene	221421(Human); 75564(Mouse)
SwissProt	Q9H1X1(Human); Q9D9V4(Mouse)

\*AREX continuously optimizes our products. Webpage content may not reflect the latest updates. For inquiries, please contact [info@arexbio.com](mailto:info@arexbio.com) or your local distributor.

\*Clone Number, Reactivity, Source/Host and Clonality can be found in the product name and Key Features section above.

**DATASHEET****RSPH9 Rabbit Polyclonal Antibody**

CAT. NO. APA16769

**DATA**

Western blot analysis of RSPH9 expression in A549 (A), NIH3T3 (B), mouse testis (C), rat lung (D) whole cell lysates. (Predicted band size: 31; 34 kD; Observed band size: 36 kD)

**STORAGE**

Store at 4°C short term. For long term storage, store at -20°C, avoiding freeze/thaw cycles.

**NOTE**

For Research Use Only. Not for diagnostic, therapeutics, prophylactic or in vivo use.