

**DATASHEET**

**RTCB Rabbit Polyclonal Antibody**

CAT. NO. APA16772

**KEY FEATURES**

Target	RTCB	Source / Host	Rabbit
Reactivity	Human, Mouse, Rat	Clonality	Polyclonal
Applications	WB	Conjugation	Unconjugated
Form / Buffer	Liquid in 0.42% Potassium phosphate, 0.87% Sodium chloride, pH 7.3, 30% glycerol, and 0.01% sodium azide.		Storage at-20°C

**BACKGROUND**

3'-5' RNA ligase, catalytic subunit of the tRNA-splicing ligase complex (tRNA-LC), which is involved in the enzyme-dependent maturation of intron-containing pre-tRNAs. Functions downstream of the tRNA-splicing endonuclease that removes introns, ligating the two generated halves via phosphodiester bond formation, which is involved in the enzyme-dependent maturation of intron-containing pre-tRNAs. Functions downstream of the tRNA-splicing endonuclease that removes introns, ligating the two generated halves via phosphodiester bond formation. The ligation reaction, which requires guanosine triphosphate (GTP) and Mn(2+), proceeds through three metal-dependent steps.

**APPLICATION**

To ensure optimal assay performance, AREX recommends conducting reagent titration tailored to each testing system for optimal detection results.

WB	1:500 - 1:2000
----	----------------

\*Results are sample-specific. Please refer to your local assay conditions and test parameters for reference.

**PRODUCT OVERVIEW**

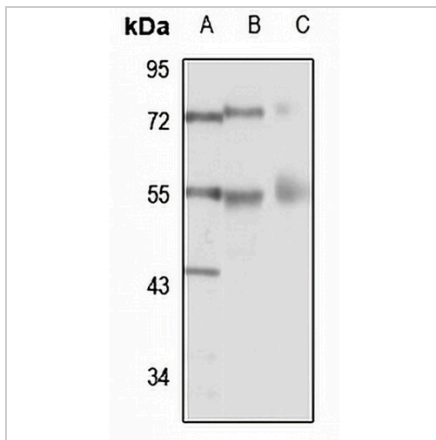
Description	Rabbit polyclonal antibody to RTCB
Specificity	Recognizes endogenous levels of RTCB protein
Antibody Type	Primary antibody
Immunogen	Recombinant fusion protein of human RTCB. The exact sequence is proprietary.
Purification	The antibody was purified by immunogen affinity chromatography.
Molecular Weight	Predicted: 55 kD; Observed: 55 kD
Form/Buffer	Liquid in 0.42% Potassium phosphate, 0.87% Sodium chloride, pH 7.3, 30% glycerol, and 0.01% sodium azide.
Alternative Names	C22orf28; tRNA-splicing ligase RtcB homolog
Gene Symbol	RTCB
Entrez Gene	51493(Human); 28088(Mouse); 362855(Rat)
SwissProt	Q9Y3I0(Human); Q99LF4(Mouse); Q6AYT3(Rat)

\*AREX continuously optimizes our products. Webpage content may not reflect the latest updates. For inquiries, please contact [info@arexbio.com](mailto:info@arexbio.com) or your local distributor.

\*Clone Number, Reactivity, Source/Host and Clonality can be found in the product name and Key Features section above.

**DATASHEET****RTCB Rabbit Polyclonal Antibody**

CAT. NO. APA16772

**DATA**

Western blot analysis of RTCB expression in A549 (A), mouse liver (B), rat liver (C) whole cell lysates. (Predicted band size: 55 kD; Observed band size: 55 kD)

**STORAGE**

Store at 4°C short term. For long term storage, store at -20°C, avoiding freeze/thaw cycles.

**NOTE**

For Research Use Only. Not for diagnostic, therapeutics, prophylactic or in vivo use.