

**DATASHEET**

**ETO Rabbit Polyclonal Antibody**

CAT. NO. APA16774

**KEY FEATURES**

Target	ETO	Source / Host	Rabbit
Reactivity	Human, Mouse	Clonality	Polyclonal
Applications	WB	Conjugation	Unconjugated
Form / Buffer	Liquid in 0.42% Potassium phosphate, 0.87% Sodium chloride, pH 7.3, 30% glycerol, and 0.01% sodium azide.		Storage at -20°C

**BACKGROUND**

Transcriptional corepressor which facilitates transcriptional repression via its association with DNA-binding transcription factors and recruitment of other corepressors and histone-modifying enzymes . Can repress the expression of MMP7 in a ZBTB33-dependent manner . Can repress transactivation mediated by TCF12 . Acts as a negative regulator of adipogenesis . The AML1-MTG8/ETO fusion protein frequently found in leukemic cells is involved in leukemogenesis and contributes to hematopoietic stem/progenitor cell self-renewal .

**APPLICATION**

To ensure optimal assay performance, AREX recommends conducting reagent titration tailored to each testing system for optimal detection results.

WB	1:500 - 1:2000
----	----------------

\*Results are sample-specific. Please refer to your local assay conditions and test parameters for reference.

**PRODUCT OVERVIEW**

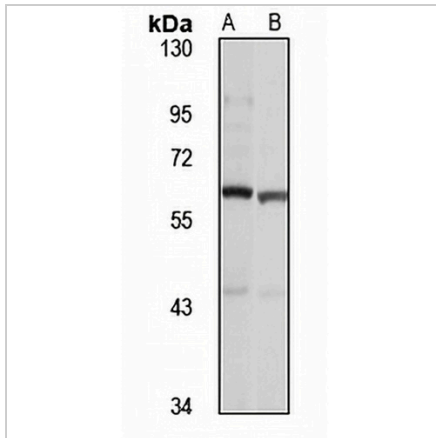
Description	Rabbit polyclonal antibody to ETO
Specificity	Recognizes endogenous levels of ETO protein
Antibody Type	Primary antibody
Immunogen	Recombinant fusion protein of human ETO. The exact sequence is proprietary.
Purification	The antibody was purified by immunogen affinity chromatography.
Molecular Weight	Predicted: 44; Observed: 67 kD
Form/Buffer	Liquid in 0.42% Potassium phosphate, 0.87% Sodium chloride, pH 7.3, 30% glycerol, and 0.01% sodium azide.
Alternative Names	AML1T1; CBFA2T1; CDR; ETO; MTG8; ZMYND2; Protein CBFA2T1; Cyclin-D-related protein; Eight twenty one protein; Protein ETO; Protein MTG8; Zinc finger MYND domain-containing protein 2
Gene Symbol	RUNX1T1
Entrez Gene	862(Human); 12395(Mouse)
SwissProt	Q06455(Human); Q61909(Mouse)

\*AREX continuously optimizes our products. Webpage content may not reflect the latest updates. For inquiries, please contact [info@arexbio.com](mailto:info@arexbio.com) or your local distributor.

\*Clone Number, Reactivity, Source/Host and Clonality can be found in the product name and Key Features section above.

**DATASHEET****ETO Rabbit Polyclonal Antibody**

CAT. NO. APA16774

**DATA**

Western blot analysis of ETO expression in HepG2 (A), SHSY5Y (B) whole cell lysates. (Predicted band size: 44; 48; 63; 64; 67; 68 kD; Observed band size: 67 kD)

**STORAGE**

Store at 4°C short term. For long term storage, store at -20°C, avoiding freeze/thaw cycles.

**NOTE**

For Research Use Only. Not for diagnostic, therapeutics, prophylactic or in vivo use.