

DATASHEET

SAAL1 Rabbit Polyclonal Antibody

CAT. NO. APA16782

KEY FEATURES

Target	SAAL1	Source / Host	Rabbit
Reactivity	Human, Mouse, Rat	Clonality	Polyclonal
Applications	WB	Conjugation	Unconjugated
Form / Buffer	Liquid in 0.42% Potassium phosphate, 0.87% Sodium chloride, pH 7.3, 30% glycerol, and 0.01% sodium azide.		Storage at -20°C

BACKGROUND

Plays a role in promoting the proliferation of synovial fibroblasts in response to pro-inflammatory stimuli.

APPLICATION

To ensure optimal assay performance, AREX recommends conducting reagent titration tailored to each testing system for optimal detection results.

WB	1:500 - 1:2000
----	----------------

*Results are sample-specific. Please refer to your local assay conditions and test parameters for reference.

PRODUCT OVERVIEW

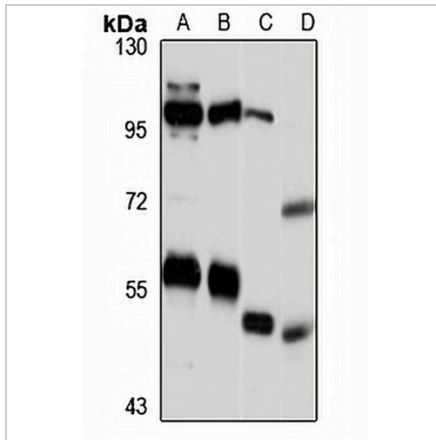
Description	Rabbit polyclonal antibody to SAAL1
Specificity	Recognizes endogenous levels of SAAL1 protein
Antibody Type	Primary antibody
Immunogen	Recombinant fusion protein of human SAAL1. The exact sequence is proprietary.
Purification	The antibody was purified by immunogen affinity chromatography.
Molecular Weight	Predicted: 53 kD; Observed: 54-58 kD
Form/Buffer	Liquid in 0.42% Potassium phosphate, 0.87% Sodium chloride, pH 7.3, 30% glycerol, and 0.01% sodium azide.
Alternative Names	Protein SAAL1
Gene Symbol	SAAL1
Entrez Gene	113174(Human); 78935(Mouse)
SwissProt	Q96ER3(Human); Q9D2C2(Mouse)

*AREX continuously optimizes our products. Webpage content may not reflect the latest updates. For inquiries, please contact info@arexbio.com or your local distributor.

*Clone Number, Reactivity, Source/Host and Clonality can be found in the product name and Key Features section above.

DATASHEET**SAAL1 Rabbit Polyclonal Antibody**

CAT. NO. APA16782

DATA

Western blot analysis of SAAL1 expression in HeLa (A), Jurkat (B), mouse lung (C), rat kidney (D) whole cell lysates. (Predicted band size: 53 kD; Observed band size: 54-58 kD)

STORAGE

Store at 4°C short term. For long term storage, store at -20°C, avoiding freeze/thaw cycles.

NOTE

For Research Use Only. Not for diagnostic, therapeutics, prophylactic or in vivo use.