

**DATASHEET**

**SAP130 Rabbit Polyclonal Antibody**

CAT. NO. APA16786

**KEY FEATURES**

Target	SAP130	Source / Host	Rabbit
Reactivity	Human, Mouse	Clonality	Polyclonal
Applications	WB	Conjugation	Unconjugated
Form / Buffer	Liquid in 0.42% Potassium phosphate, 0.87% Sodium chloride, pH 7.3, 30% glycerol, and 0.01% sodium azide.	Storage	at-20°C

**BACKGROUND**

Acts as a transcriptional repressor. May function in the assembly and/or enzymatic activity of the mSin3A corepressor complex or in mediating interactions between the complex and other regulatory complexes.

**APPLICATION**

To ensure optimal assay performance, AREX recommends conducting reagent titration tailored to each testing system for optimal detection results.

WB	1:500 - 1:2000
----	----------------

\*Results are sample-specific. Please refer to your local assay conditions and test parameters for reference.

**PRODUCT OVERVIEW**

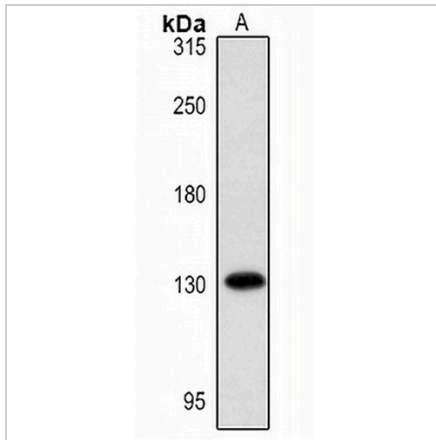
Description	Rabbit polyclonal antibody to SAP130
Specificity	Recognizes endogenous levels of SAP130 protein
Antibody Type	Primary antibody
Immunogen	Recombinant fusion protein of human SAP130. The exact sequence is proprietary.
Purification	The antibody was purified by immunogen affinity chromatography.
Molecular Weight	Predicted: 65; Observed: 140 kD
Form/Buffer	Liquid in 0.42% Potassium phosphate, 0.87% Sodium chloride, pH 7.3, 30% glycerol, and 0.01% sodium azide.
Alternative Names	Histone deacetylase complex subunit SAP130; 130 kDa Sin3-associated polypeptide; Sin3-associated polypeptide p130
Gene Symbol	SAP130
Entrez Gene	79595(Human); 269003(Mouse)
SwissProt	Q9H0E3(Human); Q8BIH0(Mouse)

\*AREX continuously optimizes our products. Webpage content may not reflect the latest updates. For inquiries, please contact [info@arexbio.com](mailto:info@arexbio.com) or your local distributor.

\*Clone Number, Reactivity, Source/Host and Clonality can be found in the product name and Key Features section above.

**DATASHEET****SAP130 Rabbit Polyclonal Antibody**

CAT. NO. APA16786

**DATA**

Western blot analysis of SAP130 expression in HeLa (A) whole cell lysates. (Predicted band size: 65; 110; 113 kD; Observed band size: 140 kD)

**STORAGE**

Store at 4°C short term. For long term storage, store at -20°C, avoiding freeze/thaw cycles.

**NOTE**

For Research Use Only. Not for diagnostic, therapeutics, prophylactic or in vivo use.