

**DATASHEET**

**SerRSmt Rabbit Polyclonal Antibody**

CAT. NO. APA16789

**KEY FEATURES**

Target	SerRSmt	Source / Host	Rabbit
Reactivity	Human, Mouse	Clonality	Polyclonal
Applications	WB, IHC	Conjugation	Unconjugated
Form / Buffer	Liquid in 0.42% Potassium phosphate, 0.87% Sodium chloride, pH 7.3, 30% glycerol, and 0.01% sodium azide.		Storage at -20°C

**BACKGROUND**

Catalyzes the attachment of serine to tRNA(Ser). Is also probably able to aminoacylate tRNA(Sec) with serine, to form the misacylated tRNA L-seryl-tRNA(Sec), which will be further converted into selenocysteinyl-tRNA(Sec).

**APPLICATION**

To ensure optimal assay performance, AREX recommends conducting reagent titration tailored to each testing system for optimal detection results.

WB	1:500 - 1:2000
IHC	1:50 - 1:200

\*Results are sample-specific. Please refer to your local assay conditions and test parameters for reference.

**PRODUCT OVERVIEW**

Description	Rabbit polyclonal antibody to SerRSmt
Specificity	Recognizes endogenous levels of SerRSmt protein
Antibody Type	Primary antibody
Immunogen	Recombinant fusion protein of human SerRSmt. The exact sequence is proprietary.
Purification	The antibody was purified by immunogen affinity chromatography.
Molecular Weight	Predicted: 58 kD; Observed: 50 kD
Form/Buffer	Liquid in 0.42% Potassium phosphate, 0.87% Sodium chloride, pH 7.3, 30% glycerol, and 0.01% sodium azide.
Alternative Names	SARSM; Serine--tRNA ligase mitochondrial; SerRSmt; Seryl-tRNA synthetase; SerRS; Seryl-tRNA(Ser/Sec) synthetase
Gene Symbol	SARS2
Entrez Gene	54938(Human); 71984(Mouse)
SwissProt	Q9NP81(Human); Q9JLL8(Mouse)

\*AREX continuously optimizes our products. Webpage content may not reflect the latest updates. For inquiries, please contact [info@arexbio.com](mailto:info@arexbio.com) or your local distributor.

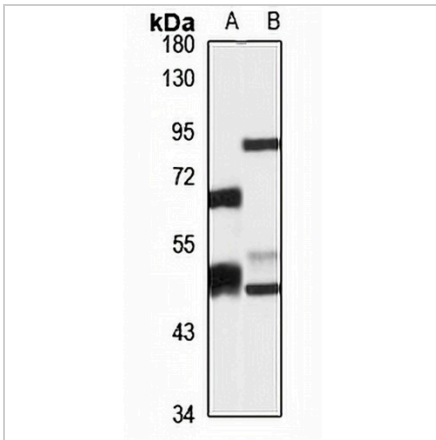
\*Clone Number, Reactivity, Source/Host and Clonality can be found in the product name and Key Features section above.

**DATASHEET**

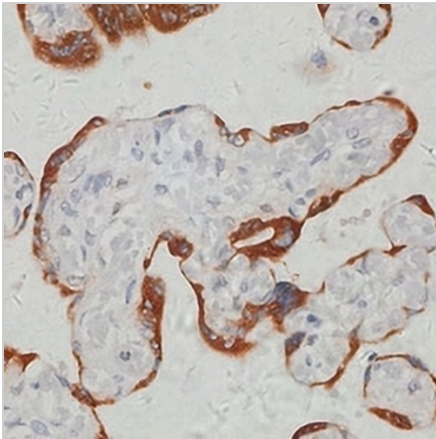
**SerRSmt Rabbit Polyclonal Antibody**

CAT. NO. APA16789

**DATA**



Western blot analysis of SerRSmt expression in HepG2 (A), mouse kidney (B) whole cell lysates. (Predicted band size: 58 kD; Observed band size: 50 kD)



Immunohistochemical analysis of SerRSmt staining in human placenta formalin fixed paraffin embedded tissue section. The section was pre-treated using heat mediated antigen retrieval with sodium citrate buffer (pH 6.0). The section was then incubated with the antibody at room temperature and detected using an HRP conjugated compact polymer system. DAB was used as the chromogen. The section was then counterstained with haematoxylin and mounted with DPX.

**STORAGE**

Store at 4°C short term. For long term storage, store at -20°C, avoiding freeze/thaw cycles.

**NOTE**

For Research Use Only. Not for diagnostic, therapeutics, prophylactic or in vivo use.