

**DATASHEET**

**SASH1 Rabbit Polyclonal Antibody**

CAT. NO. APA16790

**KEY FEATURES**

Target	SASH1	Source / Host	Rabbit
Reactivity	Human, Mouse	Clonality	Polyclonal
Applications	WB	Conjugation	Unconjugated
Form / Buffer	Liquid in 0.42% Potassium phosphate, 0.87% Sodium chloride, pH 7.3, 30% glycerol, and 0.01% sodium azide.		Storage at -20°C

**BACKGROUND**

Is a positive regulator of NF-kappa-B signaling downstream of TLR4 activation. It acts as a scaffold molecule to assemble a molecular complex that includes TRAF6, MAP3K7, CHUK and IKKKB, thereby facilitating NF-kappa-B signaling activation . Regulates TRAF6 and MAP3K7 ubiquitination . Involved in the regulation of cell mobility . Regulates lipopolysaccharide (LPS)-induced endothelial cell migration . Is involved in the regulation of skin pigmentation through the control of melanocyte migration in the epidermis .

**APPLICATION**

To ensure optimal assay performance, AREX recommends conducting reagent titration tailored to each testing system for optimal detection results.

WB	1:500 - 1:2000
----	----------------

\*Results are sample-specific. Please refer to your local assay conditions and test parameters for reference.

**PRODUCT OVERVIEW**

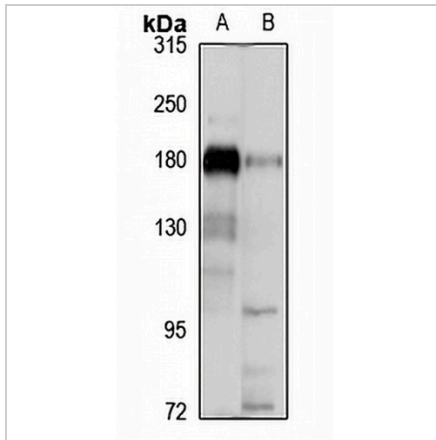
Description	Rabbit polyclonal antibody to SASH1
Specificity	Recognizes endogenous levels of SASH1 protein
Antibody Type	Primary antibody
Immunogen	Recombinant fusion protein of human SASH1. The exact sequence is proprietary.
Purification	The antibody was purified by immunogen affinity chromatography.
Molecular Weight	Predicted: 136 kD; Observed: 170 kD
Form/Buffer	Liquid in 0.42% Potassium phosphate, 0.87% Sodium chloride, pH 7.3, 30% glycerol, and 0.01% sodium azide.
Alternative Names	KIAA0790; PEPE1; SAM and SH3 domain-containing protein 1; Proline-glutamate repeat-containing protein
Gene Symbol	SASH1
Entrez Gene	23328(Human); 70097(Mouse)
SwissProt	O94885(Human); P59808(Mouse)

\*AREX continuously optimizes our products. Webpage content may not reflect the latest updates. For inquiries, please contact [info@arexbio.com](mailto:info@arexbio.com) or your local distributor.

\*Clone Number, Reactivity, Source/Host and Clonality can be found in the product name and Key Features section above.

**DATASHEET****SASH1 Rabbit Polyclonal Antibody**

CAT. NO. APA16790

**DATA**

Western blot analysis of SASH1 expression in U87MG (A), mouse lung (B) whole cell lysates. (Predicted band size: 136 kD; Observed band size: 170 kD)

**STORAGE**

Store at 4°C short term. For long term storage, store at -20°C, avoiding freeze/thaw cycles.

**NOTE**

For Research Use Only. Not for diagnostic, therapeutics, prophylactic or in vivo use.