

**DATASHEET**

**SAT1 Rabbit Polyclonal Antibody**

CAT. NO. APA16791

**KEY FEATURES**

Target	SAT1	Source / Host	Rabbit
Reactivity	Human, Mouse, Rat	Clonality	Polyclonal
Applications	WB	Conjugation	Unconjugated
Form / Buffer	Liquid in 0.42% Potassium phosphate, 0.87% Sodium chloride, pH 7.3, 30% glycerol, and 0.01% sodium azide.		Storage at -20°C

**BACKGROUND**

Enzyme which catalyzes the acetylation of polyamines . Substrate specificity: norspermidine = spermidine >> spermine > N(1)-acetylspermine . This highly regulated enzyme allows a fine attenuation of the intracellular concentration of polyamines . Also involved in the regulation of polyamine transport out of cells . Also acts on 1,3-diaminopropane and 1,5-diaminopentane .

**APPLICATION**

To ensure optimal assay performance, AREX recommends conducting reagent titration tailored to each testing system for optimal detection results.

WB	1:500 - 1:2000
----	----------------

\*Results are sample-specific. Please refer to your local assay conditions and test parameters for reference.

**PRODUCT OVERVIEW**

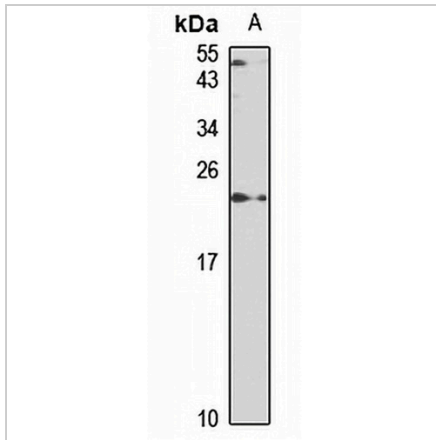
Description	Rabbit polyclonal antibody to SAT1
Specificity	Recognizes endogenous levels of SAT1 protein
Antibody Type	Primary antibody
Immunogen	Recombinant fusion protein of human SAT1. The exact sequence is proprietary.
Purification	The antibody was purified by immunogen affinity chromatography.
Molecular Weight	Predicted: 20 kD; Observed: 20 kD
Form/Buffer	Liquid in 0.42% Potassium phosphate, 0.87% Sodium chloride, pH 7.3, 30% glycerol, and 0.01% sodium azide.
Alternative Names	SAT; Diamine acetyltransferase 1; Polyamine N-acetyltransferase 1; Putrescine acetyltransferase; Spermidine/spermine N(1)-acetyltransferase 1; SSAT; SSAT-1
Gene Symbol	SAT1
Entrez Gene	6303(Human); 20229(Mouse)
SwissProt	P21673(Human); P48026(Mouse)

\*AREX continuously optimizes our products. Webpage content may not reflect the latest updates. For inquiries, please contact [info@arexbio.com](mailto:info@arexbio.com) or your local distributor.

\*Clone Number, Reactivity, Source/Host and Clonality can be found in the product name and Key Features section above.

**DATASHEET****SAT1 Rabbit Polyclonal Antibody**

CAT. NO. APA16791

**DATA**

Western blot analysis of SAT1 expression in THP1 (A) whole cell lysates. (Predicted band size: 20 kD; Observed band size: 20 kD)

**STORAGE**

Store at 4°C short term. For long term storage, store at -20°C, avoiding freeze/thaw cycles.

**NOTE**

For Research Use Only. Not for diagnostic, therapeutics, prophylactic or in vivo use.