

DATASHEET

CD36 Rabbit Polyclonal Antibody

CAT. NO. APA16794

KEY FEATURES

Target	CD36	Source / Host	Rabbit
Reactivity	Human, Mouse, Rat	Clonality	Polyclonal
Applications	WB, IHC	Conjugation	Unconjugated
Form / Buffer	Liquid in 0.42% Potassium phosphate, 0.87% Sodium chloride, pH 7.3, 30% glycerol, and 0.01% sodium azide.		Storage at-20°C

BACKGROUND

Acts as a lysosomal receptor for glucosylceramidase (GBA1) targeting.

APPLICATION

To ensure optimal assay performance, AREX recommends conducting reagent titration tailored to each testing system for optimal detection results.

WB	1:500 - 1:2000
IHC	1:50 - 1:200

*Results are sample-specific. Please refer to your local assay conditions and test parameters for reference.

PRODUCT OVERVIEW

Description	Rabbit polyclonal antibody to CD36
Specificity	Recognizes endogenous levels of CD36 protein
Antibody Type	Primary antibody
Immunogen	Recombinant fusion protein of human CD36. The exact sequence is proprietary.
Purification	The antibody was purified by immunogen affinity chromatography.
Molecular Weight	Predicted: 37; Observed: 54 kD
Form/Buffer	Liquid in 0.42% Potassium phosphate, 0.87% Sodium chloride, pH 7.3, 30% glycerol, and 0.01% sodium azide.
Alternative Names	CD36L2; LIMP2; LIMP2II; Lysosome membrane protein 2; 85 kDa lysosomal membrane sialoglycoprotein; LGP85; CD36 antigen-like 2; Lysosome membrane protein II; LIMP II; Scavenger receptor class B member 2; CD36
Gene Symbol	SCARB2
Entrez Gene	950(Human); 12492(Mouse); 117106(Rat)
SwissProt	Q14108(Human); O35114(Mouse); P27615(Rat)

*AREX continuously optimizes our products. Webpage content may not reflect the latest updates. For inquiries, please contact info@arexbio.com or your local distributor.

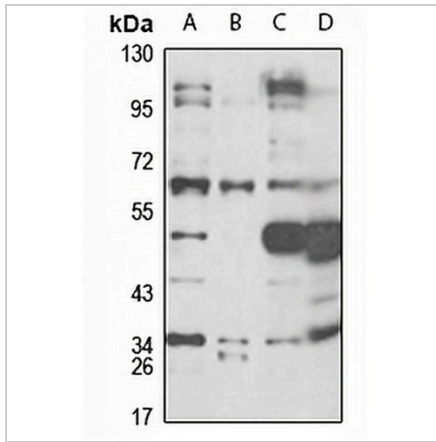
*Clone Number, Reactivity, Source/Host and Clonality can be found in the product name and Key Features section above.

DATASHEET

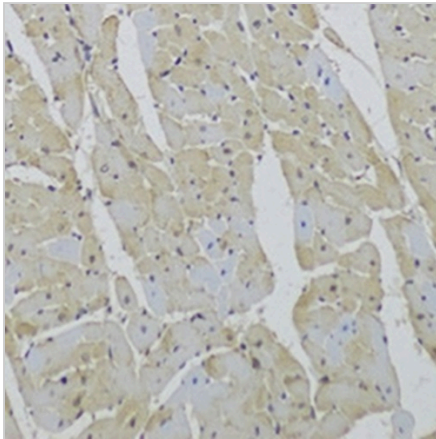
CD36 Rabbit Polyclonal Antibody

CAT. NO. APA16794

DATA



Western blot analysis of CD36 expression in SKOV3 (A), MCF7 (B), mouse liver (C), rat liver (D) whole cell lysates. (Predicted band size: 37; 54 kD; Observed band size: 54 kD)



Immunohistochemical analysis of CD36 staining in rat heart formalin fixed paraffin embedded tissue section. The section was pre-treated using heat mediated antigen retrieval with sodium citrate buffer (pH 6.0). The section was then incubated with the antibody at room temperature and detected using an HRP conjugated compact polymer system. DAB was used as the chromogen. The section was then counterstained with haematoxylin and mounted with DPX.

STORAGE

Store at 4°C short term. For long term storage, store at -20°C, avoiding freeze/thaw cycles.

NOTE

For Research Use Only. Not for diagnostic, therapeutics, prophylactic or in vivo use.