

DATASHEET

Selenocysteine Lyase Rabbit Polyclonal Antibody

CAT. NO. APA16797

KEY FEATURES

Target	Selenocysteine Lyase	Source / Host	Rabbit
Reactivity	Human, Mouse, Rat	Clonality	Polyclonal
Applications	WB	Conjugation	Unconjugated
Form / Buffer	Liquid in 0.42% Potassium phosphate, 0.87% Sodium chloride, pH 7.3, 30% glycerol, and 0.01% sodium azide.		Storage at-20°C

BACKGROUND

Catalyzes the decomposition of L-selenocysteine to L-alanine and elemental selenium.

APPLICATION

To ensure optimal assay performance, AREX recommends conducting reagent titration tailored to each testing system for optimal detection results.

WB	1:500 - 1:2000
----	----------------

*Results are sample-specific. Please refer to your local assay conditions and test parameters for reference.

PRODUCT OVERVIEW

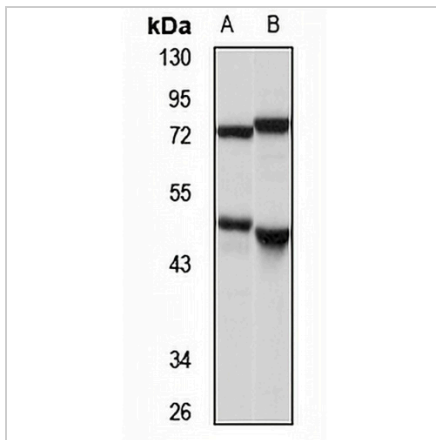
Description	Rabbit polyclonal antibody to Selenocysteine Lyase
Specificity	Recognizes endogenous levels of Selenocysteine Lyase protein
Antibody Type	Primary antibody
Immunogen	Recombinant fusion protein of human Selenocysteine Lyase. The exact sequence is proprietary.
Purification	The antibody was purified by immunogen affinity chromatography.
Molecular Weight	Predicted: 33; Observed: 48 kD
Form/Buffer	Liquid in 0.42% Potassium phosphate, 0.87% Sodium chloride, pH 7.3, 30% glycerol, and 0.01% sodium azide.
Alternative Names	SCL; Selenocysteine lyase; hSCL
Gene Symbol	SCLY
Entrez Gene	51540(Human); 50880(Mouse)
SwissProt	Q96I15(Human); Q9JLI6(Mouse)

*AREX continuously optimizes our products. Webpage content may not reflect the latest updates. For inquiries, please contact info@arexbio.com or your local distributor.

*Clone Number, Reactivity, Source/Host and Clonality can be found in the product name and Key Features section above.

DATASHEET**Selenocysteine Lyase Rabbit Polyclonal Antibody**

CAT. NO. APA16797

DATA

Western blot analysis of Selenocysteine Lyase expression in U87MG (A), mouse liver (B) whole cell lysates. (Predicted band size: 33; 48 kD; Observed band size: 48 kD)

STORAGE

Store at 4°C short term. For long term storage, store at -20°C, avoiding freeze/thaw cycles.

NOTE

For Research Use Only. Not for diagnostic, therapeutics, prophylactic or in vivo use.