

DATASHEET

Nav1.3 Rabbit Polyclonal Antibody

CAT. NO. APA16798

KEY FEATURES

Target	Nav1.3	Source / Host	Rabbit
Reactivity	Human, Mouse, Rat	Clonality	Polyclonal
Applications	WB	Conjugation	Unconjugated
Form / Buffer	Liquid in 0.42% Potassium phosphate, 0.87% Sodium chloride, pH 7.3, 30% glycerol, and 0.01% sodium azide.		Storage at -20°C

BACKGROUND

Pore-forming subunit of Nav1.3, a voltage-gated sodium (Nav) channel that directly mediates the depolarizing phase of action potentials in excitable membranes. Navs, also called VGSCs (voltage-gated sodium channels) or VDSCs (voltage-dependent sodium channels), operate by switching between closed and open conformations depending on the voltage difference across the membrane. In the open conformation they allow Na⁽⁺⁾ ions to selectively pass through the pore, along their electrochemical gradient. The influx of Na⁽⁺⁾ ions provokes membrane depolarization, initiating the propagation of electrical signals throughout cells and tissues channel that directly mediates the depolarizing phase of action potentials in excitable membranes.

APPLICATION

To ensure optimal assay performance, AREX recommends conducting reagent titration tailored to each testing system for optimal detection results.

WB	1:500 - 1:2000
----	----------------

*Results are sample-specific. Please refer to your local assay conditions and test parameters for reference.

PRODUCT OVERVIEW

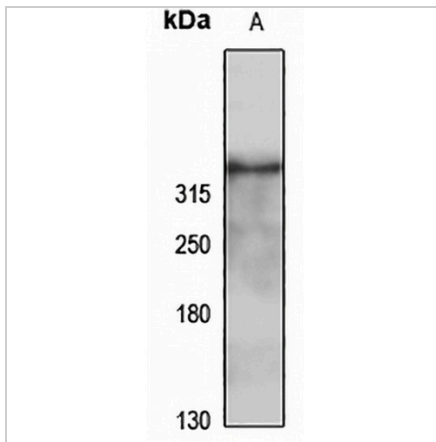
Description	Rabbit polyclonal antibody to Nav1.3
Specificity	Recognizes endogenous levels of Nav1.3 protein
Antibody Type	Primary antibody
Immunogen	Recombinant fusion protein of human Nav1.3. The exact sequence is proprietary.
Purification	The antibody was purified by immunogen affinity chromatography.
Molecular Weight	Predicted: 221; Observed: 350 kD
Form/Buffer	Liquid in 0.42% Potassium phosphate, 0.87% Sodium chloride, pH 7.3, 30% glycerol, and 0.01% sodium azide.
Alternative Names	KIAA1356; NAC3; Sodium channel protein type 3 subunit alpha; Sodium channel protein brain III subunit alpha; Sodium channel protein type III subunit alpha; Voltage-gated sodium channel subtype III; Voltage-gated sodium channel subunit alpha Nav1.3
Gene Symbol	SCN3A
Entrez Gene	6328(Human); 497770(Rat)
SwissProt	Q9NY46(Human); P08104(Rat)

*AREX continuously optimizes our products. Webpage content may not reflect the latest updates. For inquiries, please contact info@arexbio.com or your local distributor.

*Clone Number, Reactivity, Source/Host and Clonality can be found in the product name and Key Features section above.

DATASHEET**Nav1.3 Rabbit Polyclonal Antibody**

CAT. NO. APA16798

DATA

Western blot analysis of Nav1.3 expression in HT1080 (A) whole cell lysates. (Predicted band size: 221; 226 kD; Observed band size: 350 kD)

STORAGE

Store at 4°C short term. For long term storage, store at -20°C, avoiding freeze/thaw cycles.

NOTE

For Research Use Only. Not for diagnostic, therapeutics, prophylactic or in vivo use.