

DATASHEET

Alpha-NaCH Rabbit Polyclonal Antibody

CAT. NO. APA16799

KEY FEATURES

Target	Alpha-NaCH	Source / Host	Rabbit
Reactivity	Human, Mouse, Rat	Clonality	Polyclonal
Applications	WB, IF/ICC	Conjugation	Unconjugated
Form / Buffer	Liquid in 0.42% Potassium phosphate, 0.87% Sodium chloride, pH 7.3, 30% glycerol, and 0.01% sodium azide.		Storage at-20°C

BACKGROUND

This is one of the three pore-forming subunits of the heterotrimeric epithelial sodium channel (ENaC), a critical regulator of sodium balance and fluid homeostasis, a critical regulator of sodium balance and fluid homeostasis. ENaC operates in epithelial tissues, where it mediates the electrodiffusion of sodium ions from extracellular fluid through the apical membrane of cells, with water following osmotically. It plays a key role in maintaining sodium homeostasis through electrogenic sodium reabsorption in the kidneys. Additionally, ENaC is essential for airway surface liquid homeostasis, which is crucial for proper mucus clearance.

APPLICATION

To ensure optimal assay performance, AREX recommends conducting reagent titration tailored to each testing system for optimal detection results.

WB	1:500 - 1:2000
IF/ICC	1:50 - 1:200

*Results are sample-specific. Please refer to your local assay conditions and test parameters for reference.

PRODUCT OVERVIEW

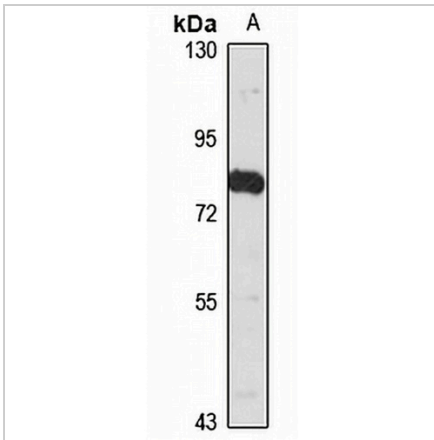
Description	Rabbit polyclonal antibody to Alpha-NaCH
Specificity	Recognizes endogenous levels of Alpha-NaCH protein
Antibody Type	Primary antibody
Immunogen	Recombinant fusion protein of human Alpha-NaCH. The exact sequence is proprietary.
Purification	The antibody was purified by immunogen affinity chromatography.
Molecular Weight	Predicted: 28; Observed: 75 kD
Form/Buffer	Liquid in 0.42% Potassium phosphate, 0.87% Sodium chloride, pH 7.3, 30% glycerol, and 0.01% sodium azide.
Alternative Names	SCNN1; Amiloride-sensitive sodium channel subunit alpha; Alpha-NaCH; Epithelial Na(+) channel subunit alpha; Alpha-ENaC; ENaCA; Nonvoltage-gated sodium channel 1 subunit alpha; SCNEA
Gene Symbol	SCNN1A
Entrez Gene	6337(Human); 20276(Mouse); 25122(Rat)
SwissProt	P37088(Human); Q61180(Mouse); P37089(Rat)

*AREX continuously optimizes our products. Webpage content may not reflect the latest updates. For inquiries, please contact info@arexbio.com or your local distributor.

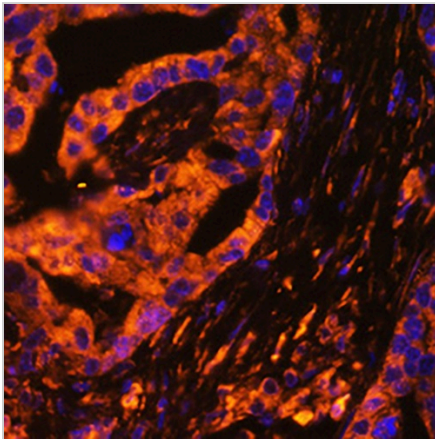
*Clone Number, Reactivity, Source/Host and Clonality can be found in the product name and Key Features section above.

DATASHEET**Alpha-NaCH Rabbit Polyclonal Antibody**

CAT. NO. APA16799

DATA

Western blot analysis of Alpha-NaCH expression in mouse lung (A) whole cell lysates. (Predicted band size: 28; 73; 75; 77; 78; 81 kD; Observed band size: 75 kD)



Immunofluorescent analysis of Alpha-NaCH staining in human lung cancer. Formalin-fixed cells were permeabilized with 0.1% Triton X-100 in TBS for 5-10 minutes and blocked with 3% BSA-PBS for 30 minutes at room temperature. Cells were probed with the primary antibody in 3% BSA-PBS and incubated overnight at 4 °C in a humidified chamber. Cells were washed with PBST and incubated with a AREX® Fluor 594-conjugated secondary antibody (red) in PBS at room temperature in the dark. DAPI was used to stain the cell nuclei (blue).

STORAGE

Store at 4°C short term. For long term storage, store at -20°C, avoiding freeze/thaw cycles.

NOTE

For Research Use Only. Not for diagnostic, therapeutics, prophylactic or in vivo use.