

DATASHEET

Scribble Rabbit Polyclonal Antibody

CAT. NO. APA16801

KEY FEATURES

Target	Scribble	Source / Host	Rabbit
Reactivity	Human	Clonality	Polyclonal
Applications	WB, IF/ICC	Conjugation	Unconjugated
Form / Buffer	Liquid in 0.42% Potassium phosphate, 0.87% Sodium chloride, pH 7.3, 30% glycerol, and 0.01% sodium azide.		Storage at -20°C

BACKGROUND

Scaffold protein involved in different aspects of polarized cell differentiation regulating epithelial and neuronal morphogenesis and T-cell polarization . Via its interaction with CRTAM, required for the late phase polarization of a subset of CD4+ T-cells, which in turn regulates TCR-mediated proliferation and IFNG and IL22 production . Plays a role in cell directional movement, cell orientation, cell sheet organization and Golgi complex polarization at the cell migration front . Promotes epithelial cell layer barrier function via maintaining cell-cell adhesion . Most probably functions in the establishment of apico-basal cell polarity .

APPLICATION

To ensure optimal assay performance, AREX recommends conducting reagent titration tailored to each testing system for optimal detection results.

WB	1:500 - 1:2000
IF/ICC	1:50 - 1:200

*Results are sample-specific. Please refer to your local assay conditions and test parameters for reference.

PRODUCT OVERVIEW

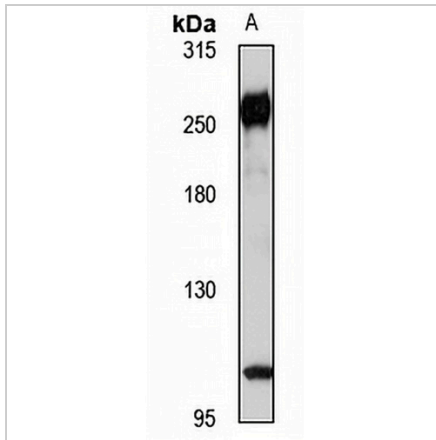
Description	Rabbit polyclonal antibody to Scribble
Specificity	Recognizes endogenous levels of Scribble protein
Antibody Type	Primary antibody
Immunogen	Recombinant fusion protein of human Scribble. The exact sequence is proprietary.
Purification	The antibody was purified by immunogen affinity chromatography.
Molecular Weight	Predicted: 175 kD; Observed: 260 kD
Form/Buffer	Liquid in 0.42% Potassium phosphate, 0.87% Sodium chloride, pH 7.3, 30% glycerol, and 0.01% sodium azide.
Alternative Names	CRIB1; KIAA0147; LAP4; SCRB1; VARTUL; Protein scribble homolog; Scribble; hScrib; Protein LAP4
Gene Symbol	SCRIB
Entrez Gene	23513(Human)
SwissProt	Q14160(Human)

*AREX continuously optimizes our products. Webpage content may not reflect the latest updates. For inquiries, please contact info@arex.bio or your local distributor.

*Clone Number, Reactivity, Source/Host and Clonality can be found in the product name and Key Features section above.

DATASHEET**Scribble Rabbit Polyclonal Antibody**

CAT. NO. APA16801

DATA

Western blot analysis of Scribble expression in HEK293T (A) whole cell lysates. (Predicted band size: 175 kD; Observed band size: 260 kD)

STORAGE

Store at 4°C short term. For long term storage, store at -20°C, avoiding freeze/thaw cycles.

NOTE

For Research Use Only. Not for diagnostic, therapeutics, prophylactic or in vivo use.