

## DATASHEET

# SDHAF2 Rabbit Polyclonal Antibody

CAT. NO. APA16805

### KEY FEATURES

Target	SDHAF2	Source / Host	Rabbit
Reactivity	Human, Mouse, Rat	Clonality	Polyclonal
Applications	WB	Conjugation	Unconjugated
Form / Buffer	Liquid in 0.42% Potassium phosphate, 0.87% Sodium chloride, pH 7.3, 30% glycerol, and 0.01% sodium azide.		Storage at -20°C

### BACKGROUND

Plays an essential role in the assembly of succinate dehydrogenase (SDH), an enzyme complex (also referred to as respiratory complex II) that is a component of both the tricarboxylic acid (TCA) cycle and the mitochondrial electron transport chain, and which couples the oxidation of succinate to fumarate with the reduction of ubiquinone (coenzyme Q) to ubiquinol. Required for flavinylation (covalent attachment of FAD) of the flavoprotein subunit SDHA of the SDH catalytic dimer.

### APPLICATION

To ensure optimal assay performance, AREX recommends conducting reagent titration tailored to each testing system for optimal detection results.

WB	1:500 - 1:2000
----	----------------

\*Results are sample-specific. Please refer to your local assay conditions and test parameters for reference.

### PRODUCT OVERVIEW

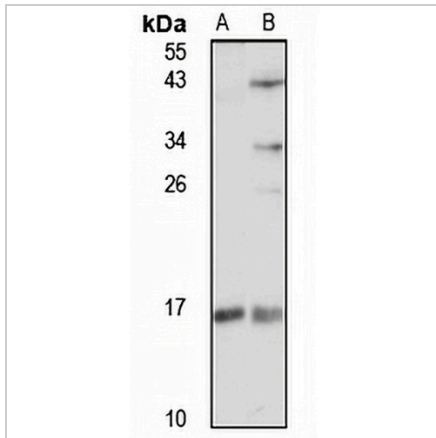
Description	Rabbit polyclonal antibody to SDHAF2
Specificity	Recognizes endogenous levels of SDHAF2 protein
Antibody Type	Primary antibody
Immunogen	Recombinant fusion protein of human SDHAF2. The exact sequence is proprietary.
Purification	The antibody was purified by immunogen affinity chromatography.
Molecular Weight	Predicted: 19 kD; Observed: 15 kD
Form/Buffer	Liquid in 0.42% Potassium phosphate, 0.87% Sodium chloride, pH 7.3, 30% glycerol, and 0.01% sodium azide.
Alternative Names	C11orf79; PGL2; SDH5; Succinate dehydrogenase assembly factor 2 mitochondrial; SDH assembly factor 2; Succinate dehydrogenase subunit 5 mitochondrial; hSDH5
Gene Symbol	SDHAF2
Entrez Gene	54949(Human); 66072(Mouse); 361726(Rat)
SwissProt	Q9NX18(Human); Q8C6I2(Mouse); Q5RJQ7(Rat)

\*AREX continuously optimizes our products. Webpage content may not reflect the latest updates. For inquiries, please contact [info@arexbio.com](mailto:info@arexbio.com) or your local distributor.

\*Clone Number, Reactivity, Source/Host and Clonality can be found in the product name and Key Features section above.

**DATASHEET****SDHAF2 Rabbit Polyclonal Antibody**

CAT. NO. APA16805

**DATA**

Western blot analysis of SDHAF2 expression in HeLa (A), mouse brain (B) whole cell lysates. (Predicted band size: 19 kD; Observed band size: 15 kD)

**STORAGE**

Store at 4°C short term. For long term storage, store at -20°C, avoiding freeze/thaw cycles.

**NOTE**

For Research Use Only. Not for diagnostic, therapeutics, prophylactic or in vivo use.