

DATASHEET

SEC31A Rabbit Polyclonal Antibody

CAT. NO. APA16808

KEY FEATURES

Target	SEC31A	Source / Host	Rabbit
Reactivity	Human, Mouse, Rat	Clonality	Polyclonal
Applications	WB	Conjugation	Unconjugated
Form / Buffer	Liquid in 0.42% Potassium phosphate, 0.87% Sodium chloride, pH 7.3, 30% glycerol, and 0.01% sodium azide.		Storage at -20°C

BACKGROUND

Component of the coat protein complex II (COPII) which promotes the formation of transport vesicles from the endoplasmic reticulum (ER) which promotes the formation of transport vesicles from the endoplasmic reticulum (ER). The coat has two main functions, the physical deformation of the endoplasmic reticulum membrane into vesicles and the selection of cargo molecules.

APPLICATION

To ensure optimal assay performance, AREX recommends conducting reagent titration tailored to each testing system for optimal detection results.

WB	1:500 - 1:2000
----	----------------

*Results are sample-specific. Please refer to your local assay conditions and test parameters for reference.

PRODUCT OVERVIEW

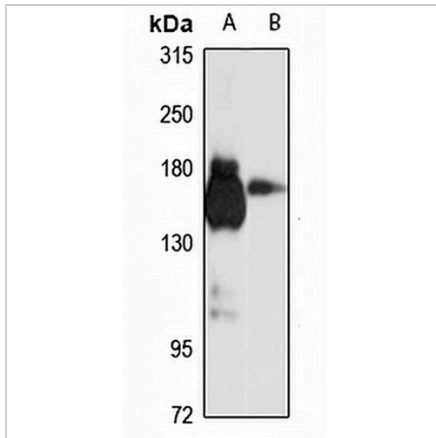
Description	Rabbit polyclonal antibody to SEC31A
Specificity	Recognizes endogenous levels of SEC31A protein
Antibody Type	Primary antibody
Immunogen	Recombinant fusion protein of human SEC31A. The exact sequence is proprietary.
Purification	The antibody was purified by immunogen affinity chromatography.
Molecular Weight	Predicted: 56; Observed: 165 kD
Form/Buffer	Liquid in 0.42% Potassium phosphate, 0.87% Sodium chloride, pH 7.3, 30% glycerol, and 0.01% sodium azide.
Alternative Names	KIAA0905; SEC31L1; Protein transport protein Sec31A; ABP125; ABP130; SEC31-like protein 1; SEC31-related protein A; Web1-like protein
Gene Symbol	SEC31A
Entrez Gene	22872(Human); 69162(Mouse); 93646(Rat)
SwissProt	O94979(Human); Q3UPL0(Mouse); Q9Z2Q1(Rat)

*AREX continuously optimizes our products. Webpage content may not reflect the latest updates. For inquiries, please contact info@arexbio.com or your local distributor.

*Clone Number, Reactivity, Source/Host and Clonality can be found in the product name and Key Features section above.

DATASHEET**SEC31A Rabbit Polyclonal Antibody**

CAT. NO. APA16808

DATA

Western blot analysis of SEC31A expression in mouse liver (A), rat liver (B) whole cell lysates. (Predicted band size: 56; 105-134 kD; Observed band size: 165 kD)

STORAGE

Store at 4°C short term. For long term storage, store at -20°C, avoiding freeze/thaw cycles.

NOTE

For Research Use Only. Not for diagnostic, therapeutics, prophylactic or in vivo use.