

**DATASHEET**

**Semaphorin 3F Rabbit Polyclonal Antibody**

CAT. NO. APA16809

**KEY FEATURES**

Target	Semaphorin 3F	Source / Host	Rabbit
Reactivity	Human, Mouse, Rat	Clonality	Polyclonal
Applications	WB	Conjugation	Unconjugated
Form / Buffer	Liquid in 0.42% Potassium phosphate, 0.87% Sodium chloride, pH 7.3, 30% glycerol, and 0.01% sodium azide.		Storage at -20°C

**BACKGROUND**

May play a role in cell motility and cell adhesion.

**APPLICATION**

To ensure optimal assay performance, AREX recommends conducting reagent titration tailored to each testing system for optimal detection results.

WB	1:500 - 1:2000
----	----------------

\*Results are sample-specific. Please refer to your local assay conditions and test parameters for reference.

**PRODUCT OVERVIEW**

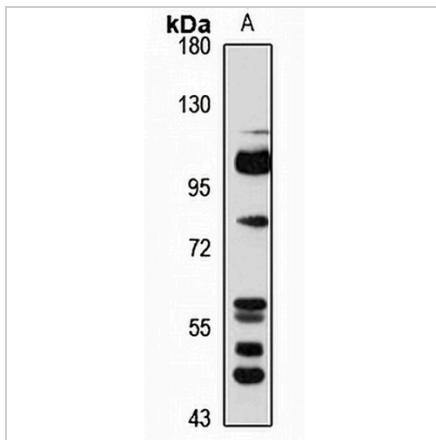
Description	Rabbit polyclonal antibody to Semaphorin 3F
Specificity	Recognizes endogenous levels of Semaphorin 3F protein
Antibody Type	Primary antibody
Immunogen	Recombinant fusion protein of human Semaphorin 3F. The exact sequence is proprietary.
Purification	The antibody was purified by immunogen affinity chromatography.
Molecular Weight	Predicted: 85; Observed: 110 kD
Form/Buffer	Liquid in 0.42% Potassium phosphate, 0.87% Sodium chloride, pH 7.3, 30% glycerol, and 0.01% sodium azide.
Alternative Names	Semaphorin-3F; Sema III/F; Semaphorin IV; Sema IV
Gene Symbol	SEMA3F
Entrez Gene	6405(Human); 20350(Mouse)
SwissProt	Q13275(Human); O88632(Mouse)

\*AREX continuously optimizes our products. Webpage content may not reflect the latest updates. For inquiries, please contact [info@arexbio.com](mailto:info@arexbio.com) or your local distributor.

\*Clone Number, Reactivity, Source/Host and Clonality can be found in the product name and Key Features section above.

**DATASHEET****Semaphorin 3F Rabbit Polyclonal Antibody**

CAT. NO. APA16809

**DATA**

Western blot analysis of Semaphorin 3F expression in U87MG (A) whole cell lysates.  
(Predicted band size: 85; 88 kD; Observed band size: 110 kD)

**STORAGE**

Store at 4°C short term. For long term storage, store at -20°C, avoiding freeze/thaw cycles.

**NOTE**

For Research Use Only. Not for diagnostic, therapeutics, prophylactic or in vivo use.