

**DATASHEET**

**SLA/LP Rabbit Polyclonal Antibody**

CAT. NO. APA16813

**KEY FEATURES**

Target	SLA/LP	Source / Host	Rabbit
Reactivity	Human, Mouse, Rat	Clonality	Polyclonal
Applications	WB, IF/ICC	Conjugation	Unconjugated
Form / Buffer	Liquid in 0.42% Potassium phosphate, 0.87% Sodium chloride, pH 7.3, 30% glycerol, and 0.01% sodium azide.		Storage at -20°C

**BACKGROUND**

Converts O-phosphoseryl-tRNA(Sec) to selenocysteinyl-tRNA(Sec) required for selenoprotein biosynthesis.

**APPLICATION**

To ensure optimal assay performance, AREX recommends conducting reagent titration tailored to each testing system for optimal detection results.

WB	1:500 - 1:2000
IF/ICC	1:50 - 1:200

\*Results are sample-specific. Please refer to your local assay conditions and test parameters for reference.

**PRODUCT OVERVIEW**

Description	Rabbit polyclonal antibody to SLA/LP
Specificity	Recognizes endogenous levels of SLA/LP protein
Antibody Type	Primary antibody
Immunogen	Recombinant fusion protein of human SLA/LP. The exact sequence is proprietary.
Purification	The antibody was purified by immunogen affinity chromatography.
Molecular Weight	Predicted: 5; Observed: 56 kD
Form/Buffer	Liquid in 0.42% Potassium phosphate, 0.87% Sodium chloride, pH 7.3, 30% glycerol, and 0.01% sodium azide.
Alternative Names	TRNP48; O-phosphoseryl-tRNA(Sec) selenium transferase; Liver-pancreas antigen; LP; SLA-p35; SLA/LP autoantigen; Selenocysteine synthase; Sec synthase; Selenocysteinyl-tRNA(Sec) synthase; Sep-tRNA:Sec-tRNA synthase; SepSecS; Soluble liver antigen; SLA; UGA suppressor tRNA-associated protein; tRNA(Ser/Sec)-associated antigenic protein
Gene Symbol	SEPSECS
Entrez Gene	51091(Human); 211006(Mouse)
SwissProt	Q9HD40(Human); Q6P6M7(Mouse)

\*AREX continuously optimizes our products. Webpage content may not reflect the latest updates. For inquiries, please contact [info@arexbio.com](mailto:info@arexbio.com) or your local distributor.

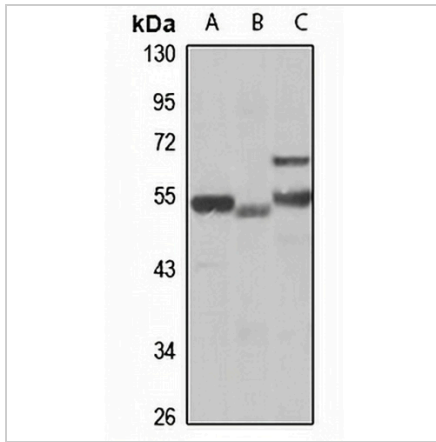
\*Clone Number, Reactivity, Source/Host and Clonality can be found in the product name and Key Features section above.

**DATASHEET**

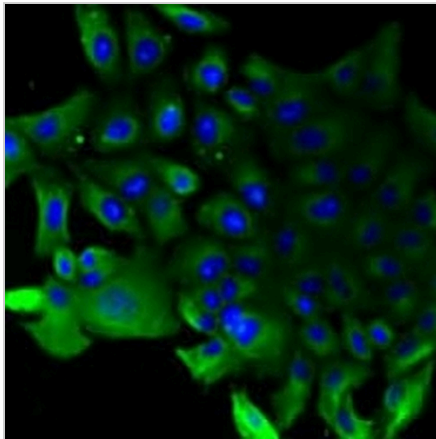
**SLA/LP Rabbit Polyclonal Antibody**

CAT. NO. APA16813

**DATA**



Western blot analysis of SLA/LP expression in THP1 (A), mouse kidney (B), rat liver (C) whole cell lysates. (Predicted band size: 5; 55 kD; Observed band size: 56 kD)



Immunofluorescent analysis of SLA/LP staining in U2OS cells. Formalin-fixed cells were permeabilized with 0.1% Triton X-100 in TBS for 5-10 minutes and blocked with 3% BSA-PBS for 30 minutes at room temperature. Cells were probed with the primary antibody in 3% BSA-PBS and incubated overnight at 4 °C in a humidified chamber. Cells were washed with PBST and incubated with a Alexa Fluor 488-conjugated secondary antibody (green) in PBS at room temperature in the dark.

**STORAGE**

Store at 4°C short term. For long term storage, store at -20°C, avoiding freeze/thaw cycles.

**NOTE**

For Research Use Only. Not for diagnostic, therapeutics, prophylactic or in vivo use.