

**DATASHEET**

**SERBP1 Rabbit Polyclonal Antibody**

CAT. NO. APA16814

**KEY FEATURES**

Target	SERBP1	Source / Host	Rabbit
Reactivity	Human, Mouse, Rat	Clonality	Polyclonal
Applications	WB	Conjugation	Unconjugated
Form / Buffer	Liquid in 0.42% Potassium phosphate, 0.87% Sodium chloride, pH 7.3, 30% glycerol, and 0.01% sodium azide.		Storage at -20°C

**BACKGROUND**

Ribosome-binding protein that promotes ribosome hibernation, a process during which ribosomes are stabilized in an inactive state and preserved from proteasomal degradation . Acts via its association with EEF2/eEF2 factor, sequestering EEF2/eEF2 at the A-site of the ribosome and promoting ribosome stabilization and storage in an inactive state . May also play a role in the regulation of mRNA stability: binds to the 3'-most 134 nt of the SERPINE1/PAI1 mRNA, a region which confers cyclic nucleotide regulation of message decay . Seems to play a role in PML-nuclear bodies formation .

**APPLICATION**

To ensure optimal assay performance, AREX recommends conducting reagent titration tailored to each testing system for optimal detection results.

WB	1:500 - 1:2000
----	----------------

\*Results are sample-specific. Please refer to your local assay conditions and test parameters for reference.

**PRODUCT OVERVIEW**

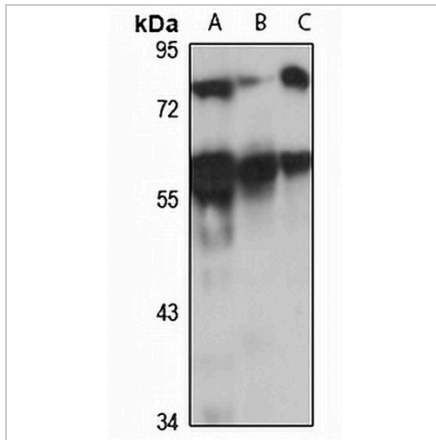
Description	Rabbit polyclonal antibody to SERBP1
Specificity	Recognizes endogenous levels of SERBP1 protein
Antibody Type	Primary antibody
Immunogen	Recombinant fusion protein of human SERBP1. The exact sequence is proprietary.
Purification	The antibody was purified by immunogen affinity chromatography.
Molecular Weight	Predicted: 42; Observed: 60 kD
Form/Buffer	Liquid in 0.42% Potassium phosphate, 0.87% Sodium chloride, pH 7.3, 30% glycerol, and 0.01% sodium azide.
Alternative Names	PAIRBP1; Plasminogen activator inhibitor 1 RNA-binding protein; PAI1 RNA-binding protein 1; PAI-RBP1; SERPINE1 mRNA-binding protein 1
Gene Symbol	SERBP1
Entrez Gene	26135(Human); 66870(Mouse); 246303(Rat)
SwissProt	Q8NC51(Human); Q9CY58(Mouse); Q6AXS5(Rat)

\*AREX continuously optimizes our products. Webpage content may not reflect the latest updates. For inquiries, please contact [info@arexbio.com](mailto:info@arexbio.com) or your local distributor.

\*Clone Number, Reactivity, Source/Host and Clonality can be found in the product name and Key Features section above.

**DATASHEET****SERBP1 Rabbit Polyclonal Antibody**

CAT. NO. APA16814

**DATA**

Western blot analysis of SERBP1 expression in HeLa (A), mouse lung (B), rat liver (C) whole cell lysates. (Predicted band size: 42; 43; 44 kD; Observed band size: 60 kD)

**STORAGE**

Store at 4°C short term. For long term storage, store at -20°C, avoiding freeze/thaw cycles.

**NOTE**

For Research Use Only. Not for diagnostic, therapeutics, prophylactic or in vivo use.