

DATASHEET

Serpin A7 Rabbit Polyclonal Antibody

CAT. NO. APA16816

KEY FEATURES

Target	Serpin A7	Source / Host	Rabbit
Reactivity	Human, Mouse, Rat	Clonality	Polyclonal
Applications	WB, IF/ICC	Conjugation	Unconjugated
Form / Buffer	Liquid in 0.42% Potassium phosphate, 0.87% Sodium chloride, pH 7.3, 30% glycerol, and 0.01% sodium azide.		Storage at -20°C

BACKGROUND

Major thyroid hormone transport protein in serum.

APPLICATION

To ensure optimal assay performance, AREX recommends conducting reagent titration tailored to each testing system for optimal detection results.

WB	1:500 - 1:1000
IF/ICC	1:50 - 1:200

*Results are sample-specific. Please refer to your local assay conditions and test parameters for reference.

PRODUCT OVERVIEW

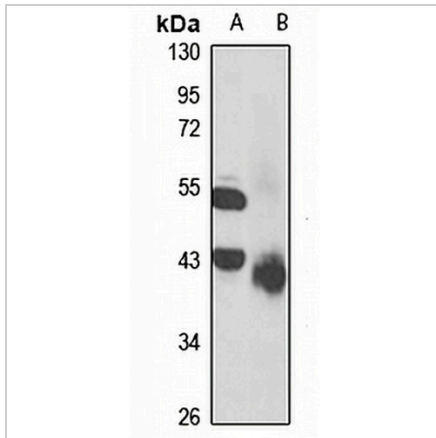
Description	Rabbit polyclonal antibody to Serpin A7
Specificity	Recognizes endogenous levels of Serpin A7 protein
Antibody Type	Primary antibody
Immunogen	Recombinant fusion protein of human Serpin A7. The exact sequence is proprietary.
Purification	The antibody was purified by immunogen affinity chromatography.
Molecular Weight	Predicted: 46 kD; Observed: 46 kD
Form/Buffer	Liquid in 0.42% Potassium phosphate, 0.87% Sodium chloride, pH 7.3, 30% glycerol, and 0.01% sodium azide.
Alternative Names	TBG; Thyroxine-binding globulin; Serpin A7; T4-binding globulin
Gene Symbol	SERPINA7
Entrez Gene	6906(Human); 331535(Mouse)
SwissProt	P05543(Human); P61939(Mouse); P35577(Rat)

*AREX continuously optimizes our products. Webpage content may not reflect the latest updates. For inquiries, please contact info@arexbio.com or your local distributor.

*Clone Number, Reactivity, Source/Host and Clonality can be found in the product name and Key Features section above.

DATASHEET**Serpin A7 Rabbit Polyclonal Antibody**

CAT. NO. APA16816

DATA

Western blot analysis of Serpin A7 expression in mouse heart (A), rat liver (B) whole cell lysates. (Predicted band size: 46 kD; Observed band size: 46 kD)

STORAGE

Store at 4°C short term. For long term storage, store at -20°C, avoiding freeze/thaw cycles.

NOTE

For Research Use Only. Not for diagnostic, therapeutics, prophylactic or in vivo use.