

## DATASHEET

# Serpin D1 Rabbit Polyclonal Antibody

CAT. NO. APA16819

### KEY FEATURES

Target	Serpin D1	Source / Host	Rabbit
Reactivity	Human, Mouse, Rat	Clonality	Polyclonal
Applications	WB	Conjugation	Unconjugated
Form / Buffer	Liquid in 0.42% Potassium phosphate, 0.87% Sodium chloride, pH 7.3, 30% glycerol, and 0.01% sodium azide.		Storage at-20°C

### BACKGROUND

Thrombin inhibitor activated by the glycosaminoglycans, heparin or dermatan sulfate. In the presence of the latter, HC-II becomes the predominant thrombin inhibitor in place of antithrombin III (AT-III). Also inhibits chymotrypsin, but in a glycosaminoglycan-independent manner.

### APPLICATION

To ensure optimal assay performance, AREX recommends conducting reagent titration tailored to each testing system for optimal detection results.

WB	1:500 - 1:2000
----	----------------

\*Results are sample-specific. Please refer to your local assay conditions and test parameters for reference.

### PRODUCT OVERVIEW

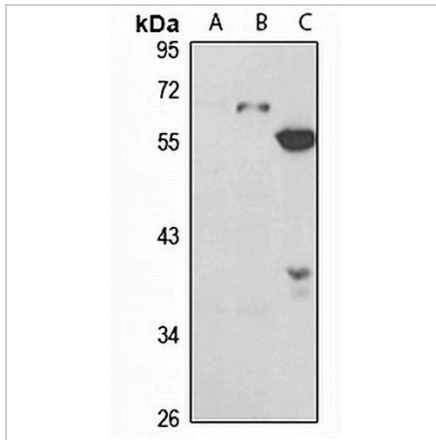
Description	Rabbit polyclonal antibody to Serpin D1
Specificity	Recognizes endogenous levels of Serpin D1 protein
Antibody Type	Primary antibody
Immunogen	Recombinant fusion protein of human Serpin D1. The exact sequence is proprietary.
Purification	The antibody was purified by immunogen affinity chromatography.
Molecular Weight	Predicted: 57 kD; Observed: 57-69 kD
Form/Buffer	Liquid in 0.42% Potassium phosphate, 0.87% Sodium chloride, pH 7.3, 30% glycerol, and 0.01% sodium azide.
Alternative Names	HCF2; Heparin cofactor 2; Heparin cofactor II; HC-II; Protease inhibitor leuserpin-2; HLS2; Serpin D1
Gene Symbol	SERPIND1
Entrez Gene	3053(Human); 15160(Mouse); 79224(Rat)
SwissProt	P05546(Human); P49182(Mouse); Q64268(Rat)

\*AREX continuously optimizes our products. Webpage content may not reflect the latest updates. For inquiries, please contact [info@arexbio.com](mailto:info@arexbio.com) or your local distributor.

\*Clone Number, Reactivity, Source/Host and Clonality can be found in the product name and Key Features section above.

**DATASHEET****Serpin D1 Rabbit Polyclonal Antibody**

CAT. NO. APA16819

**DATA**

Western blot analysis of Serpin D1 expression in A431 (A), HepG2 (B), mouse liver (C) whole cell lysates. (Predicted band size: 57 kD; Observed band size: 57-69 kD)

**STORAGE**

Store at 4°C short term. For long term storage, store at -20°C, avoiding freeze/thaw cycles.

**NOTE**

For Research Use Only. Not for diagnostic, therapeutics, prophylactic or in vivo use.