

**DATASHEET**

**SETD4 Rabbit Polyclonal Antibody**

CAT. NO. APA16822

**KEY FEATURES**

Target	SETD4	Source / Host	Rabbit
Reactivity	Human, Mouse	Clonality	Polyclonal
Applications	WB	Conjugation	Unconjugated
Form / Buffer	Liquid in 0.42% Potassium phosphate, 0.87% Sodium chloride, pH 7.3, 30% glycerol, and 0.01% sodium azide.		Storage at-20°C

**BACKGROUND**

Protein-lysine N-methyltransferase that methylates both histones and non-histone proteins . Via its catalytic activity, regulates many processes, including cell proliferation, cell differentiation, inflammatory response and apoptosis. Regulates the inflammatory response by mediating mono- and dimethylation of 'Lys-4' of histone H3 (H3K4me1 and H3K4me2, respectively), leading to activate the transcription of pro-inflammatory cytokines IL6 and TNF . Through the catalysis of TBK1 monomethylation, may regulate virus-induced interferon signaling. TBK1 monomethylation enhances its interaction with MAVS, STING and IRF3, hence promoting antiviral interferon signaling .

**APPLICATION**

To ensure optimal assay performance, AREX recommends conducting reagent titration tailored to each testing system for optimal detection results.

WB	1:500 - 1:2000
----	----------------

\*Results are sample-specific. Please refer to your local assay conditions and test parameters for reference.

**PRODUCT OVERVIEW**

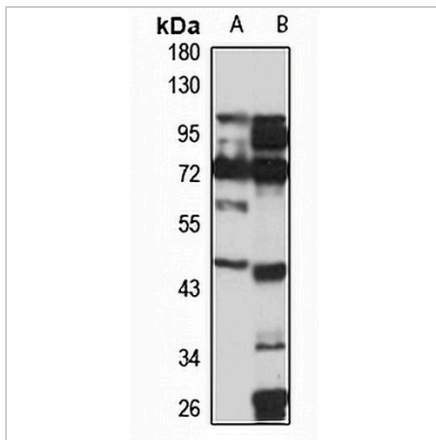
Description	Rabbit polyclonal antibody to SETD4
Specificity	Recognizes endogenous levels of SETD4 protein
Antibody Type	Primary antibody
Immunogen	Recombinant fusion protein of human SETD4. The exact sequence is proprietary.
Purification	The antibody was purified by immunogen affinity chromatography.
Molecular Weight	Predicted: 50 kD; Observed: 50 kD
Form/Buffer	Liquid in 0.42% Potassium phosphate, 0.87% Sodium chloride, pH 7.3, 30% glycerol, and 0.01% sodium azide.
Alternative Names	C21orf18; C21orf27; SET domain-containing protein 4
Gene Symbol	SETD4
Entrez Gene	54093(Human); 224440(Mouse)
SwissProt	Q9NVD3(Human); P58467(Mouse)

\*AREX continuously optimizes our products. Webpage content may not reflect the latest updates. For inquiries, please contact [info@arexbio.com](mailto:info@arexbio.com) or your local distributor.

\*Clone Number, Reactivity, Source/Host and Clonality can be found in the product name and Key Features section above.

**DATASHEET****SETD4 Rabbit Polyclonal Antibody**

CAT. NO. APA16822

**DATA**

Western blot analysis of SETD4 expression in HeLa (A), mouse liver (B) whole cell lysates. (Predicted band size: 50 kD; Observed band size: 50 kD)

**STORAGE**

Store at 4°C short term. For long term storage, store at -20°C, avoiding freeze/thaw cycles.

**NOTE**

For Research Use Only. Not for diagnostic, therapeutics, prophylactic or in vivo use.