

DATASHEET

SETDB2 Rabbit Polyclonal Antibody

CAT. NO. APA16823

KEY FEATURES

Target	SETDB2	Source / Host	Rabbit
Reactivity	Human, Mouse, Rat	Clonality	Polyclonal
Applications	WB	Conjugation	Unconjugated
Form / Buffer	Liquid in 0.42% Potassium phosphate, 0.87% Sodium chloride, pH 7.3, 30% glycerol, and 0.01% sodium azide.		Storage at -20°C

BACKGROUND

Histone methyltransferase involved in left-right axis specification in early development and mitosis. Specifically trimethylates 'Lys-9' of histone H3 (H3K9me3). H3K9me3 is a specific tag for epigenetic transcriptional repression that recruits HP1 (CBX1, CBX3 and/or CBX5) proteins to methylated histones. Contributes to H3K9me3 in both the interspersed repetitive elements and centromere-associated repeats. Plays a role in chromosome condensation and segregation during mitosis.

APPLICATION

To ensure optimal assay performance, AREX recommends conducting reagent titration tailored to each testing system for optimal detection results.

WB	1:500 - 1:1000
----	----------------

*Results are sample-specific. Please refer to your local assay conditions and test parameters for reference.

PRODUCT OVERVIEW

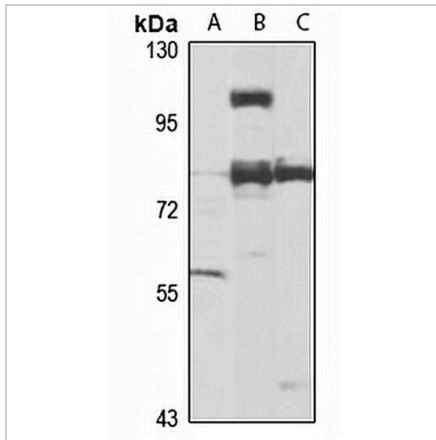
Description	Rabbit polyclonal antibody to SETDB2
Specificity	Recognizes endogenous levels of SETDB2 protein
Antibody Type	Primary antibody
Immunogen	Recombinant fusion protein of human SETDB2. The exact sequence is proprietary.
Purification	The antibody was purified by immunogen affinity chromatography.
Molecular Weight	Predicted: 80; Observed: 82 kD
Form/Buffer	Liquid in 0.42% Potassium phosphate, 0.87% Sodium chloride, pH 7.3, 30% glycerol, and 0.01% sodium azide.
Alternative Names	C13orf4; CLLD8; KMT1F; Histone-lysine N-methyltransferase SETDB2; Chronic lymphocytic leukemia deletion region gene 8 protein; Lysine N-methyltransferase 1F; SET domain bifurcated 2
Gene Symbol	SETDB2
Entrez Gene	83852(Human); 239122(Mouse)
SwissProt	Q96T68(Human); Q8C267(Mouse)

*AREX continuously optimizes our products. Webpage content may not reflect the latest updates. For inquiries, please contact info@arexbio.com or your local distributor.

*Clone Number, Reactivity, Source/Host and Clonality can be found in the product name and Key Features section above.

DATASHEET**SETDB2 Rabbit Polyclonal Antibody**

CAT. NO. APA16823

DATA

Western blot analysis of SETDB2 expression in HL60 (A), mouse thymus (B), rat heart (C) whole cell lysates. (Predicted band size: 80; 81 kD; Observed band size: 82 kD)

STORAGE

Store at 4°C short term. For long term storage, store at -20°C, avoiding freeze/thaw cycles.

NOTE

For Research Use Only. Not for diagnostic, therapeutics, prophylactic or in vivo use.