

DATASHEET

SFI1 Rabbit Polyclonal Antibody

CAT. NO. APA16824

KEY FEATURES

Target	SFI1	Source / Host	Rabbit
Reactivity	Human, Mouse	Clonality	Polyclonal
Applications	WB	Conjugation	Unconjugated
Form / Buffer	Liquid in 0.42% Potassium phosphate, 0.87% Sodium chloride, pH 7.3, 30% glycerol, and 0.01% sodium azide.		Storage at -20°C

BACKGROUND

Plays a role in the dynamic structure of centrosome-associated contractile fibers via its interaction with CETN2.

APPLICATION

To ensure optimal assay performance, AREX recommends conducting reagent titration tailored to each testing system for optimal detection results.

WB	1:500 - 1:2000
----	----------------

*Results are sample-specific. Please refer to your local assay conditions and test parameters for reference.

PRODUCT OVERVIEW

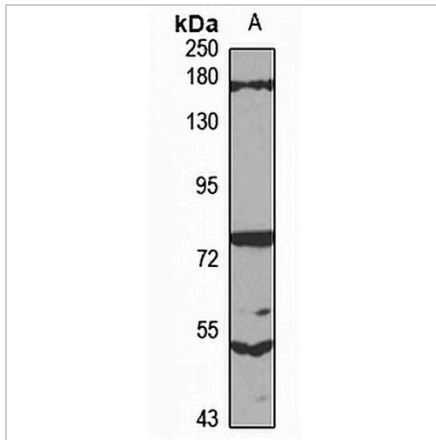
Description	Rabbit polyclonal antibody to SFI1
Specificity	Recognizes endogenous levels of SFI1 protein
Antibody Type	Primary antibody
Immunogen	Recombinant fusion protein of human SFI1. The exact sequence is proprietary.
Purification	The antibody was purified by immunogen affinity chromatography.
Molecular Weight	Predicted: 117-147 kD; Observed: 148 kD
Form/Buffer	Liquid in 0.42% Potassium phosphate, 0.87% Sodium chloride, pH 7.3, 30% glycerol, and 0.01% sodium azide.
Alternative Names	KIAA0542; Protein SFI1 homolog; hSFI1
Gene Symbol	SFI1
Entrez Gene	9814(Human); 78887(Mouse)
SwissProt	A8K8P3(Human); Q3UZY0(Mouse)

*AREX continuously optimizes our products. Webpage content may not reflect the latest updates. For inquiries, please contact info@arexbio.com or your local distributor.

*Clone Number, Reactivity, Source/Host and Clonality can be found in the product name and Key Features section above.

DATASHEET**SFI1 Rabbit Polyclonal Antibody**

CAT. NO. APA16824

DATA

Western blot analysis of SFI1 expression in MCF7 (A) whole cell lysates. (Predicted band size: 117-147 kD; Observed band size: 148 kD)

STORAGE

Store at 4°C short term. For long term storage, store at -20°C, avoiding freeze/thaw cycles.

NOTE

For Research Use Only. Not for diagnostic, therapeutics, prophylactic or in vivo use.