

DATASHEET

SFRP1 Rabbit Polyclonal Antibody

CAT. NO. APA16825

KEY FEATURES

Target	SFRP1	Source / Host	Rabbit
Reactivity	Human, Mouse, Rat	Clonality	Polyclonal
Applications	WB, IHC	Conjugation	Unconjugated
Form / Buffer	Liquid in 0.42% Potassium phosphate, 0.87% Sodium chloride, pH 7.3, 30% glycerol, and 0.01% sodium azide.		Storage at-20°C

BACKGROUND

Soluble frizzled-related proteins (sFRPS) function as modulators of Wnt signaling through direct interaction with Wnts. They have a role in regulating cell growth and differentiation in specific cell types. SFRP1 decreases intracellular beta-catenin levels. Has antiproliferative effects on vascular cells, in vitro and in vivo, and can induce, in vivo, an angiogenic response. In vascular cell cycle, delays the G1 phase and entry into the S phase. In kidney development, inhibits tubule formation and bud growth in metanephroi. Inhibits WNT1/WNT4-mediated TCF-dependent transcription.

APPLICATION

To ensure optimal assay performance, AREX recommends conducting reagent titration tailored to each testing system for optimal detection results.

WB	1:500 - 1:2000
IHC	1:50 - 1:200

*Results are sample-specific. Please refer to your local assay conditions and test parameters for reference.

PRODUCT OVERVIEW

Description	Rabbit polyclonal antibody to SFRP1
Specificity	Recognizes endogenous levels of SFRP1 protein
Antibody Type	Primary antibody
Immunogen	Recombinant fusion protein of human SFRP1. The exact sequence is proprietary.
Purification	The antibody was purified by immunogen affinity chromatography.
Molecular Weight	Predicted: 35 kD; Observed: 35 kD
Form/Buffer	Liquid in 0.42% Potassium phosphate, 0.87% Sodium chloride, pH 7.3, 30% glycerol, and 0.01% sodium azide.
Alternative Names	FRP; FRP1; SARP2; Secreted frizzled-related protein 1; FRP-1; sFRP-1; Secreted apoptosis-related protein 2; SARP-2
Gene Symbol	SFRP1
Entrez Gene	6422(Human); 20377(Mouse)
SwissProt	Q8N474(Human); Q8C4U3(Mouse); Q9R168(Rat)

*AREX continuously optimizes our products. Webpage content may not reflect the latest updates. For inquiries, please contact info@arexbio.com or your local distributor.

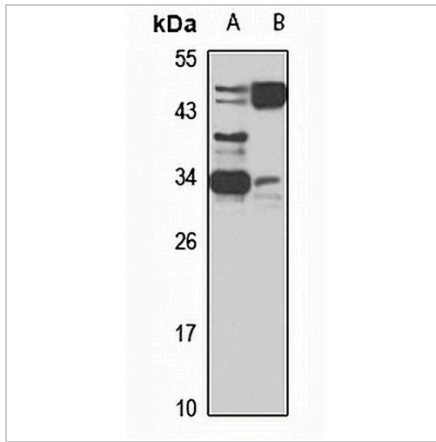
*Clone Number, Reactivity, Source/Host and Clonality can be found in the product name and Key Features section above.

DATASHEET

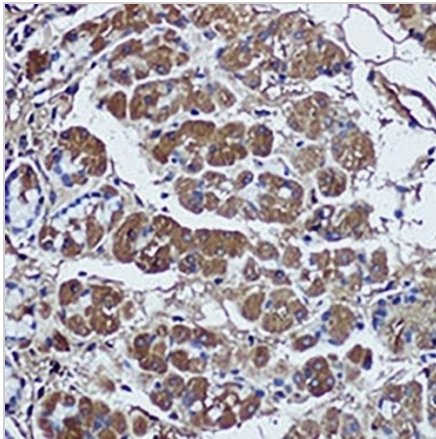
SFRP1 Rabbit Polyclonal Antibody

CAT. NO. APA16825

DATA



Western blot analysis of SFRP1 expression in HEK293T (A), mouse kidney (B) whole cell lysates. (Predicted band size: 35 kD; Observed band size: 35 kD)



Immunohistochemical analysis of SFRP1 staining in human stomach formalin fixed paraffin embedded tissue section. The section was pre-treated using heat mediated antigen retrieval with sodium citrate buffer (pH 6.0). The section was then incubated with the antibody at room temperature and detected using an HRP conjugated compact polymer system. DAB was used as the chromogen. The section was then counterstained with haematoxylin and mounted with DPX.

STORAGE

Store at 4°C short term. For long term storage, store at -20°C, avoiding freeze/thaw cycles.

NOTE

For Research Use Only. Not for diagnostic, therapeutics, prophylactic or in vivo use.